

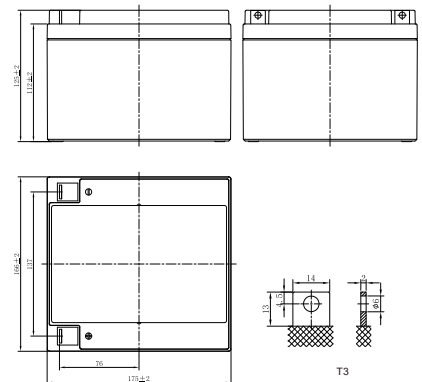
77240 LPC12V26Ah(12V26Ah/C20)

Specifications

Rated Voltage	12V		
Rated Capacity(C ₂₀ , 1.75V/cell)	26Ah		
Dimensions	Length	166±2mm	
	Width	175±2mm	
	Container Height	125±2mm	
	Total Height	125±2mm	
Approx Weight	7.80 Kg		
Terminal	T3		
Container Material	ABS		
Nominal Capacity(25°C)	24.7Ah	(10hr, 2.47A, 1.75V/cell)	
	21.9Ah	(5hr, 4.37A, 1.75V/cell)	
	19.1Ah	(3hr, 6.36A, 1.75V/cell)	
	17.0Ah	(2hr, 8.50A, 1.75V/cell)	
	14.8Ah	(1hr, 14.8A, 1.70V/cell)	
Short Circuit Current	650A		
Internal Resistance(25°C)	≤14mΩ		
Operating Temp. Range	Discharge	-20 ~ 55°C	
	Charge	0 ~ 40°C	
	Storage	-20 ~ 50°C	
Nominal Operating Temp. Range	25±3°C		
Max.Charging Current(25°C)	6.5A		
Charge voltage(25°C)	Float	2.25~2.30V/cell	-3mV/cell/°C
	Cycle	2.35~2.45V/cell	-5mV/cell/°C
Effect of temp. to Capacity	40°C	106%	
	25°C	100%	
	0°C	80%	
Self Discharge	≤3%/month @ 25°C		



Layout



Constant Current Discharge (Amperes) at 25 °C

F.V/Time	5min	10min	15min	20min	30min	45min	1h	2h	3h	4h	5h	6h	8h	10h	20h
1.85V/cell	69.9	51.1	38.8	33.1	24.8	18.2	12.6	7.7	5.84	4.81	4.08	3.54	2.81	2.34	1.28
1.80V/cell	75.1	54.2	40.7	34.4	25.6	18.7	13.5	8.2	6.15	5.06	4.25	3.69	2.91	2.42	1.29
1.75V/cell	79.2	56.3	42.0	35.3	26.2	19.1	14.2	8.5	6.36	5.21	4.37	3.78	2.99	2.47	1.30
1.70V/cell	82.9	58.6	43.4	36.4	26.9	19.5	14.8	8.9	6.57	5.34	4.47	3.87	3.04	2.51	1.33

Constant Power Discharge (Watts/cell) at 25 °C

F.V/Time	5min	10min	15min	20min	30min	45min	1h	2h	3h	4h	5h	6h	8h	10h	20h
1.85V/cell	132.2	97.3	74.2	63.7	47.9	35.2	24.7	15.2	11.6	9.6	8.16	7.09	5.64	4.71	2.59
1.80V/cell	140.8	102.4	77.4	65.9	49.2	36.1	26.5	16.1	12.1	10.0	8.45	7.35	5.82	4.85	2.60
1.75V/cell	146.7	105.7	79.5	67.3	50.3	36.7	27.7	16.7	12.5	10.3	8.63	7.49	5.94	4.90	2.62
1.70V/cell	152.1	109.2	81.7	68.9	51.3	37.4	28.7	17.2	12.8	10.5	8.8	7.62	5.99	4.97	2.64

77240 LPC12V26Ah(12V26Ah/C20)

Applications

- Electric tools
- Mobility Scooter
- Golf trolleys
- Portable lights and instruments
- Electric toys
- Portable power
- Electric wheelchair

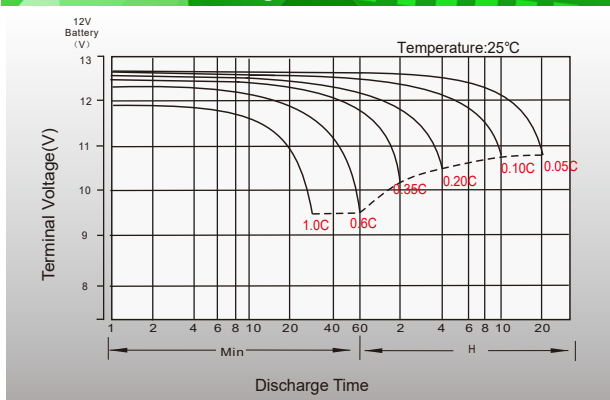
General Features

- Good cyclic property. Enhanced overcharge endurance and overdischarge recovery property
- Using oxygen recombination technology: maintenance-free
- Lower acid density, excess of electrolyte and larger distance between plates to keep battery at low temperature and slow down plate grid corrosion speed
- Unique plate group configuration, high quality AGM separator and battery management system ensure battery with a longer service life

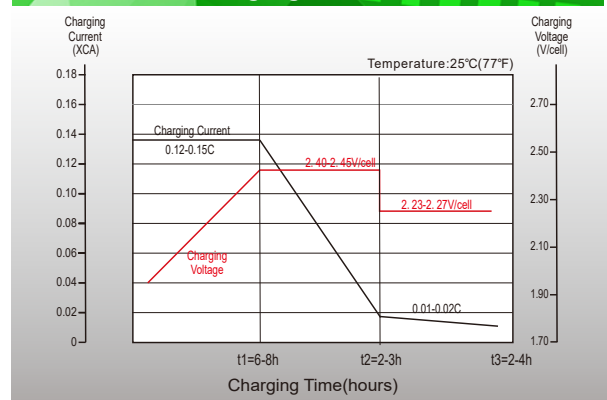
Standards

- ACC. to BCI standards
- IATF16949, ISO 9001, ISO 14001 and ISO 45001 certified production facilities

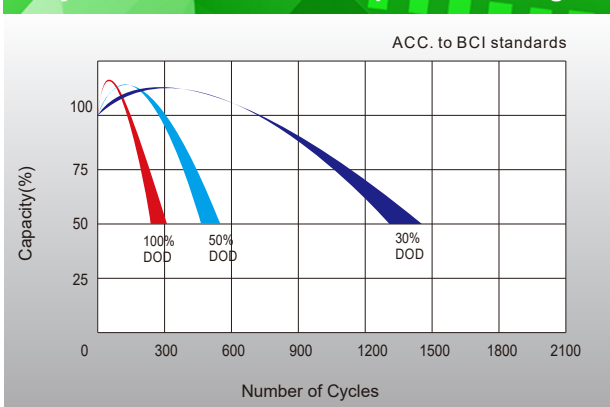
Discharge Characteristics



Charging Characteristics



Cycle Life in Relation to Depth of Discharge



Self Discharge Characteristics

