



ZK4 236-11Z-M20

- Snap action with constant contact pressure up to switching point
- 1 Cable entry M 20 x 1.5
- Thermoplastic enclosure
- Good resistance to oil and petroleum spirit
- Wide range of alternative actuators
- 30 mm x 58,5 mm x 30 mm
- Double-insulated
- Mounting details to EN 50047
- Actuator heads can be repositioned by 4 x 90°

Data

Ordering data

| | |
|-------------------------------|-----------------|
| Product type description | ZK4 236-11Z-M20 |
| Article number (order number) | 151151629 |
| eCl@ss number, version 12.0 | 27-27-26-01 |
| eCl@ss number, version 11.0 | 27-27-26-01 |
| eCl@ss number, version 9.0 | 27-27-26-01 |
| ETIM number, version 7.0 | EC000030 |
| ETIM number, version 6.0 | EC000030 |

Approvals - Standards

| | |
|--------------|--------------|
| Certificates | cULus CCC |
|--------------|--------------|

General data

| | |
|-----------|---|
| Standards | BG-GS-ET-15 EN ISO 13849-1 EN IEC 60947-5-1 |
|-----------|---|

| | |
|---------------------------|---------------------------------|
| Housing construction form | Norm construction design |
| Housing material | Plastic, glass-fibre-reinforced |
| Gross weight | 59 g |

General data - Features

| | |
|------------------------------|-----|
| Safety functions | Yes |
| Number of auxiliary contacts | 1 |
| Number of safety contacts | 1 |

Safety classification

| | |
|--------------|----------------|
| Standards | EN ISO 13849-1 |
| Mission time | 20 Year(s) |

Safety classification - Safety outputs

| | |
|---|-----------------------|
| B _{10D} Normally-closed contact (NC) | 20,000,000 Operations |
|---|-----------------------|

Mechanical data

| | |
|-------------------------------|---|
| Actuating element | Angle roller lever |
| Mechanical lifetime, minimum | 20,000,000 Operations |
| Actuating force, minimum | 6 N |
| Positive break force, minimum | 16 N |
| Actuating speed, minimum | 56 mm/min |
| Actuating speed, maximum | 1 m/s |
| Note (Actuating speed) | Actuating speed with actuating angle 30° to switch axis |

Mechanical data - Connection technique

| | |
|------------------------|---------------------------|
| Termination | Screw terminals M20 x 1.5 |
| Cable section, minimum | 0.75 mm ² |
| Cable section, maximum | 2.5 mm ² |

Note

All indications including the conductor ferrules.

Mechanical data - Dimensions

| | |
|------------------|--------|
| Length of sensor | 30 mm |
| Width of sensor | 32 mm |
| Height of sensor | 107 mm |

Ambient conditions

| | |
|----------------------|----------------|
| Degree of protection | IP65 IP67 |
| Ambient temperature | -30 ... +80 °C |

Ambient conditions - Insulation values

| | |
|---|-------|
| Rated insulation voltage U_i | 500 V |
| Rated impulse withstand voltage U_{imp} | 6 kV |

Electrical data

| | |
|--------------------------------------|------------------------|
| Thermal test current | 10 A |
| Required rated short-circuit current | 1,000 A |
| Utilisation category AC-15 | 230 VAC |
| Utilisation category AC-15 | 4 A |
| Utilisation category DC-13 | 24 VDC |
| Utilisation category DC-13 | 1 A |
| Switching element | NO contact, NC contact |
| Switching principle | Snap action |
| Bounce duration, maximum | 3 ms |
| Maximale Schalthäufigkeit | 5,000 /h |
| Switchover time, maximum | 5.5 ms |
| Material of the contacts, electrical | Silver |

Ordering code

Product type description:

(1)(2) 2(3)6-(4)Z(5)-(6)-(7)-(8)-(9)

| | |
|------------|---|
| (1) | |
| Z | Snap action |
| T | Slow action (not for AF/S) |
| (2) | |
| S | Plunger S |
| R | Roller plunger R |
| 4S | Plunger 4S |
| 4R | Roller plunger 4R |
| 1R | Offset roller lever 1R |
| K | Offset roller lever K |
| 3K | Angle roller lever 3K |
| 4K | Angle roller lever 4K |
| K4 | Angle roller lever K4 |
| 1H | Roller lever 1H |
| 7H | Roller lever 7H |
| 10H | Rod lever 10H |
| 12H | Roller lever 12H |
| 14H | Roller lever 14H |
| AF | Spring rod lever AF |
| RMS | Brass roller |
| (3) | |
| 3 | slim design |
| 215 | large design |
| (4) | |
| 02 | 2 NC contact |
| 11 | 1 NO contact/1 NC contact |
| 20 | 2 NO contacts, (switches with 2 NO contacts are not suitable for safety applications) |

| | |
|----------------|--|
| (5) | |
| H | Slow action with staggered contacts |
| UE | Slow action with overlapping contacts |
| (6) | |
| without | Cable entry M20 |
| ID | Cut clamps |
| NPT | Cable entry NPT 1/2" |
| ST | M12 connector with A-coding |
| ST-2310 | M12 connector with B-coding |
| (7) | |
| 1297 | Enclosure with transverse slotted holes |
| (8) | |
| 2138 | Roller lever 7H for position switches with safety function |
| (9) | |
| 1637 | Gold-plated contacts |

Pictures

Product picture (catalogue individual photo)



ID: k236kf04

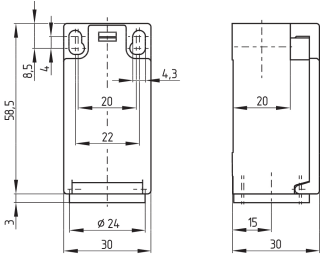
| 898.9 kB | .jpg | 352.778 x 988.131 mm - 1000 x 2801 px - 72 dpi

| 184.5 kB | .png | 74.083 x 207.433 mm - 210 x 588 px - 72 dpi

| 76.2 kB | .png | 44.097 x 123.472 mm - 125 x 350 px - 72 dpi

| 32.1 kB | .png | 74.083 x 74.083 mm - 210 x 210 px - 72 dpi

Dimensional drawing basic component

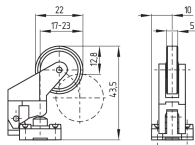


ID: 1-236g01

| 4.0 kB | .png | 74.083 x 73.378 mm - 210 x 208 px - 72 dpi

| 115.0 kB | .jpg | 352.778 x 349.956 mm - 1000 x 992 px - 72 dpi

Dimensional drawing actuator



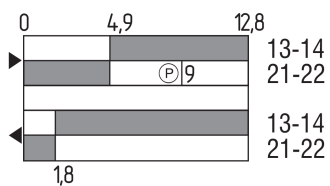
ID: 1k235g04

| 27.7 kB | .cdr |

| 8.2 kB | .png | 74.083 x 51.153 mm - 210 x 145 px - 72 dpi

| 82.7 kB | .jpg | 352.778 x 243.769 mm - 1000 x 691 px - 72 dpi

Switch travel diagram



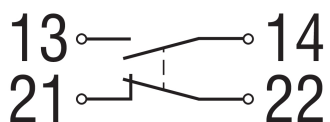
ID: kk235s24

| 26.0 kB | .cdr |

| 2.3 kB | .png | 74.083 x 39.864 mm - 210 x 113 px - 72 dpi

| 69.9 kB | .jpg | 352.778 x 190.147 mm - 1000 x 539 px - 72 dpi

Diagram



ID: k1o1sk01

| 52.2 kB | .jpg | 352.778 x 143.581 mm - 1000 x 407 px - 72 dpi

| 2.6 kB | .png | 74.083 x 29.986 mm - 210 x 85 px - 72 dpi

K.A. Schmersal GmbH & Co. KG, Möddinghofe 30, 42279 Wuppertal

The details and data referred to have been carefully checked. Images may diverge from original. Further technical data can be found in the manual. Technical amendments and errors possible.

Generated on: 29/09/2025, 06:58