



German manufacturer

**Assembly instruction
conversion kit for old
ETG door drives to the
LDO AC 4.0**

conversion kit 25

200/25/e2m2

Please read the instruction carefully before you start the assembly. Keep the documents and pass them on if necessary.

This is for your own safety and you avoid damage to the door operator.

ETG Elevator Trading GmbH

Kömmplitzer Str.5


04519 Rackwitz

Bundesrepublik Germany

Phone:+49 (0)3 42 94 / 179700

FAX: +49 (0)3 42 94 / 179733

www.elevator-trading.de

Valid from 13.08.2019	Assembly instruction	 German manufacturer
Revision 00	Conversion kit 25	
creator: Guth		

Conversion Kit-Item. nr. 27360940 – for left and right opening doors e2 and
For left and right driving doors m2

Table of Contents

	Page
1. Function	3
2. Installation process	3
3. Documents	6
4. Change history	6

Valid from 13.08.2019	Assembly instruction Conversion kit 25	ETG ELEVATOR TRADING German manufacturer
Revision 00		
creator: Guth		

1. Function

This manual instruction is used to describe the work sequence for installing the conversion kit 25 for the drives LDO DC 2.0 to LDO AC 4.0 at cabin doors e2 and m2.

Contents of Conversion kit:



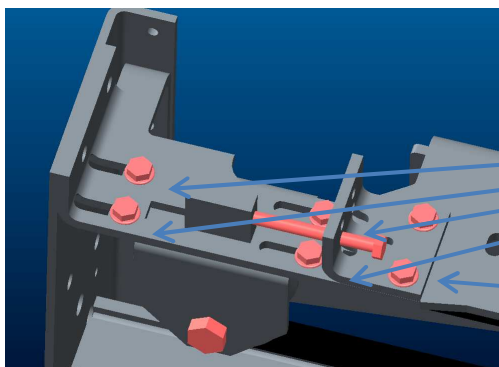
Picture 1

Warning: When you setting up the drive, please note that there is no current

2. Assembly process

Step 1: Make a note of the cable assignment for the door control in advance.

Step 2: The main tooth belt on cross header needs to declamp.



Picture 2

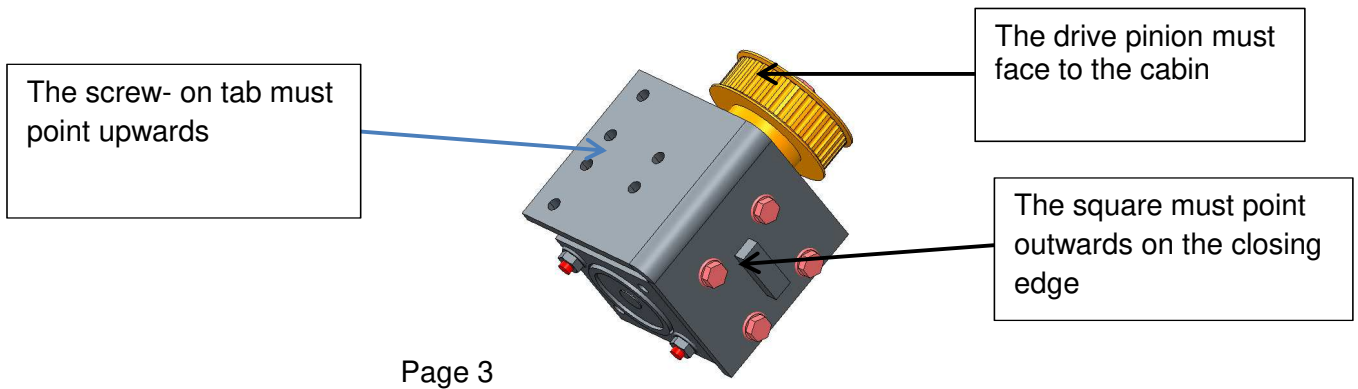
Only loosen the fastening screws

Clamping bolt

Step 3: Remove the motor and the controller LDO DC 2.0

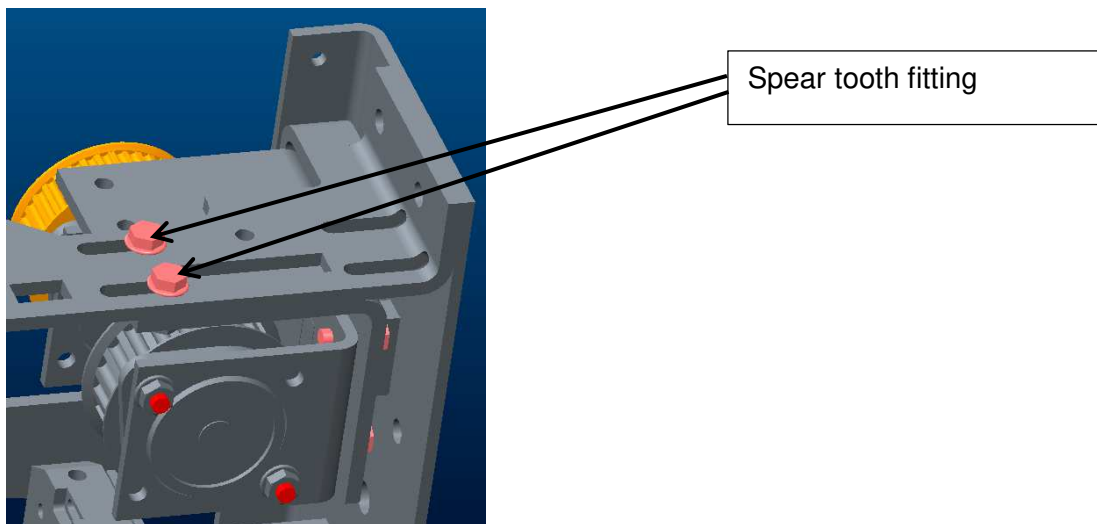
Valid from 13.08.2019	Assembly instruction Conversion kit 25	ETG ELEVATOR TRADING German manufacturer
Revision 00		
creator: Guth		

Step 4: Screw the new driveshaft unit to the fixing bracket with the 4 self-locking screws M6x16. Please note the installation position.



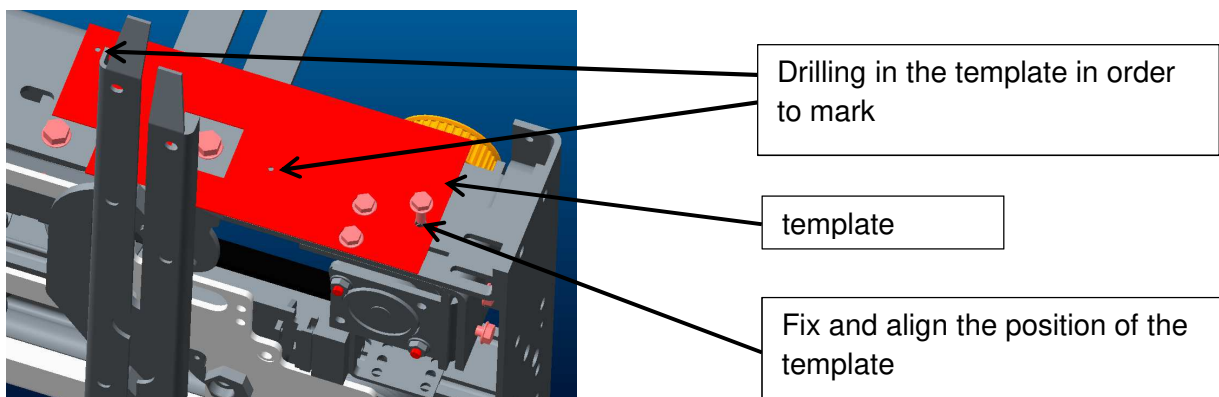
Page 3

Step 5: Take the 2 serrated bolts M6x16 with the nuts and hand tighten them to the driveshaft assembly.



Picture 4

Step 6: Place the drilling template of and fix the position with the 3 self-locking screw. The drilling template must be parallel to the crossbeam. Mark and center punch holes. The first 2 ratchet screws can then be tightened. Remove now the template and fast all screws again.

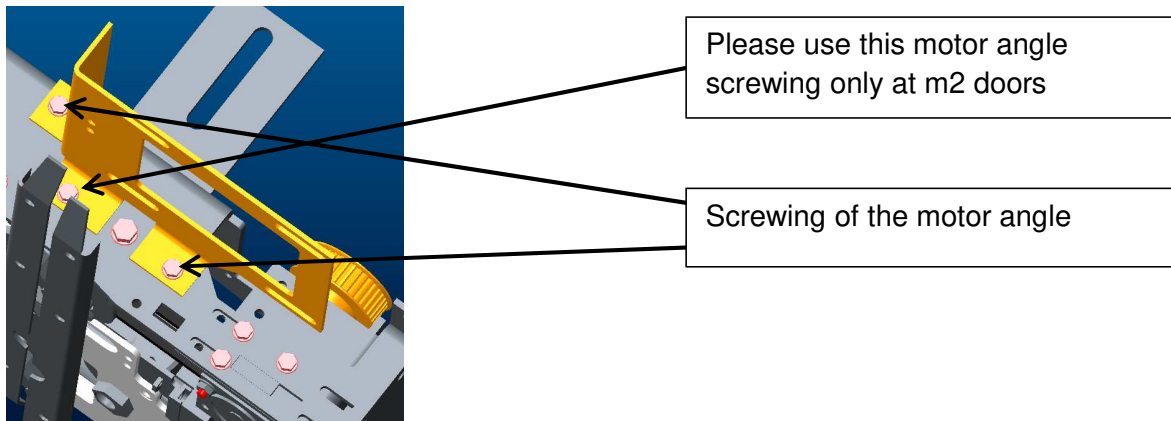


Picture 5

Valid from 13.08.2019	Assembly instruction Conversion kit 25	ETG ELEVATOR TRADING German manufacturer
Revision 00		
creator: Guth		

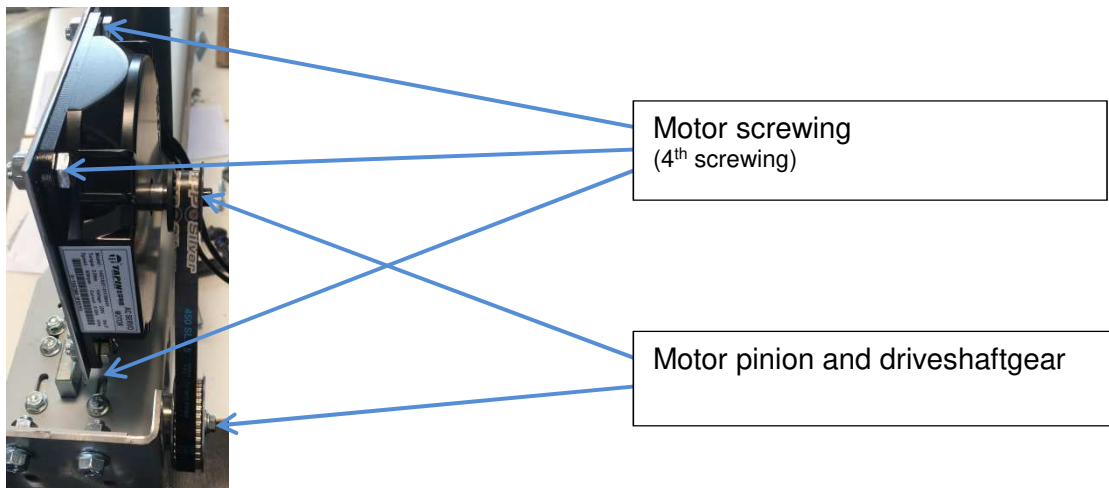
Step 7: Drill 3 bore holes for M6 screws in crossbar (we recommend an average drill bit). For the e2 doors please only drill the 2 holes shown in the picture.

Step 8: Mount the motor bracket with 3 self-locking screws M6x16 for the m2 and for the e2 with 3 self-locking screws M6x16 and self-locking nuts M6.



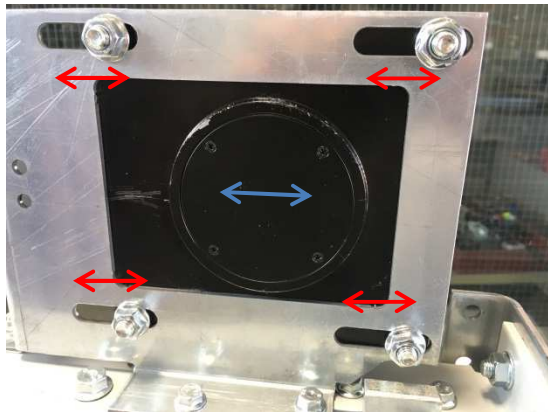
Picture 6

Step 9: Lay the tooth belt over the motor pinion and drive shaft gear wheel and first attach the motor to the motor bracket with 4 M8x20 screws and self-locking nuts. Move the motor in the elongated holes until the toothed belt is ideally tensioned. Tighten the motor screwing.



Picture 7

Valid from 13.08.2019	Assembly instruction Conversion kit 25	ETG ELEVATOR TRADING
Revision 00		
creator: Guth		



Move and clamp the motor in the elongated holes. Then tighten the motor screwing

Picture 8

Step 10: open the tooth belt at the sliding carriage at the tooth belt clamp.

Step 11: The main tooth belt through the drive shaft unit and close it again in the tooth belt clamp. Re-clamp the tensioning unit on the main tooth belt. Thread the main tooth belt through the driveshaftunit and reseal in the tooth belt clamp. Tension the main tooth belt.

Step 12: Mount the door drive controller in the appropriate place in the cross bar with 4 serrated screws. If it's required, drill new holes for M6 screws.



Picture 9

Step 13: Put the door drive into operation with using the assembly instruction LDO AC 4.0.

Step 14: The configuration point 4 – set the cabin door lock at the door width determination to “without cabin door interlock”

Notice: If you have a W-Lan Dongle you can optimized the driving curve with the parameters 1 and 7 (brace unit distance „door open“ and brace unit distance „Door close“)

3. Documents

Assembly instruction LDO AC 4.0/4.5

4. Change history

Revision	Datum	Bemerkung	
000	13.08.2019	created	
001	30.10.2019	revised	