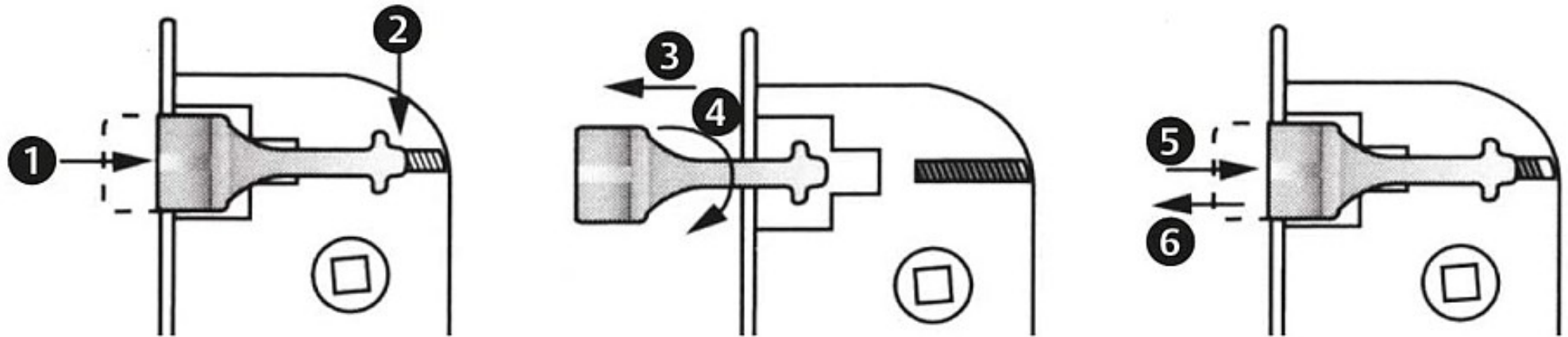


Reverse the Opening Direction



- ① Fully push in the latch bolt and hold it in this position.
- ② Keep the spring compressed manually or using a tool.
- ③ Pull to remove the latch bolt and release the spring.
- ④ Turn the latch bolt around.
- ⑤ Insert the reversed latch bolt.
- ⑥ Release the latch bolt.