

CD150 analog output – Measurement range 0 up to 6000 mm



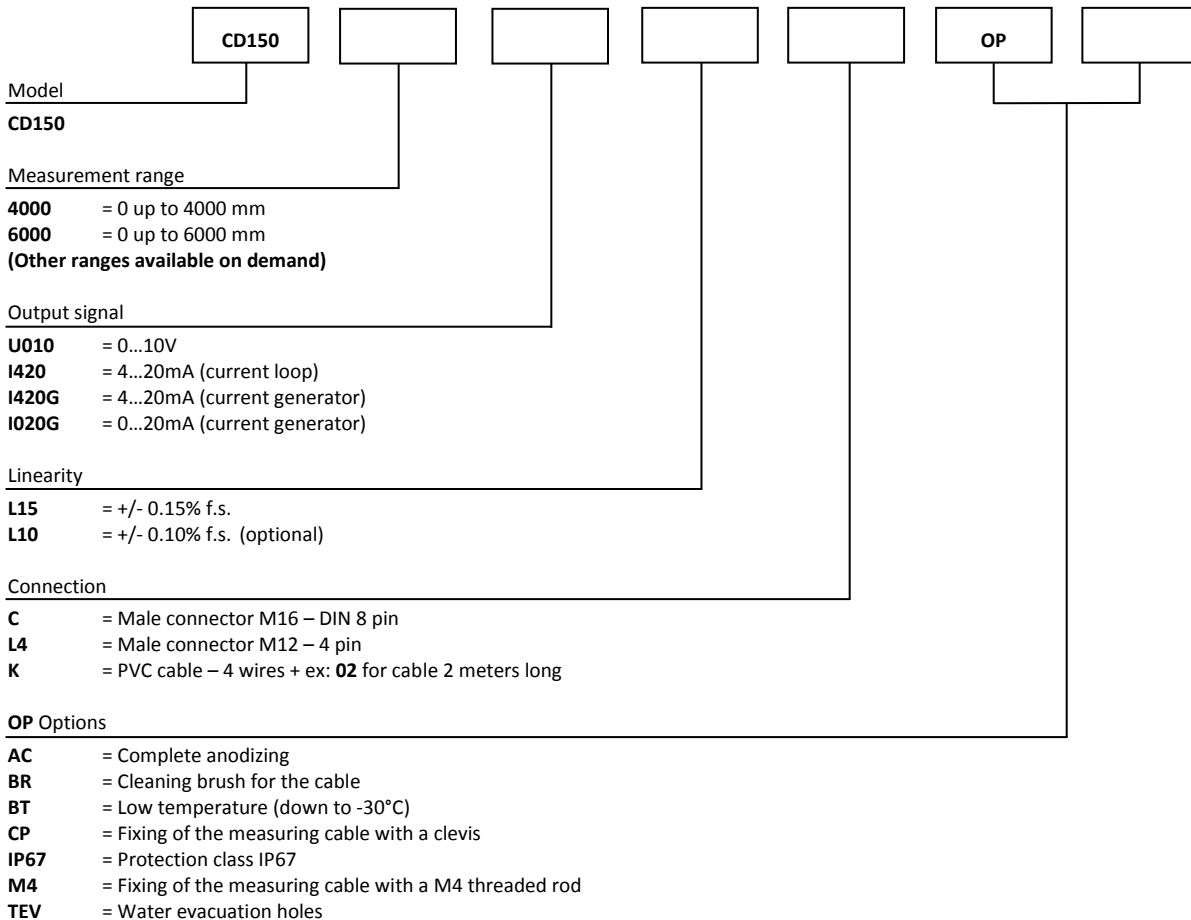
Specifications:

| | |
|-----------------------|---|
| Measurement range | 0 up to 6000 mm |
| Output signal | 0...10V (galvanic isolation) 4...20mA current loop 4...20mA current generator (galvanic isolation) 0...20mA current generator (galvanic isolation) |
| Resolution | Quasi infinite (depends on the operating system) |
| Material | Body and cover - aluminium (RohS) Measuring cable – Stainless steel |
| Cable diameter | 0,60 mm |
| Detection element | Multi-turn Hybrid potentiometer |
| Connection | Male connector M16 – DIN 8 pin Male connector M12 – 4 pin PVC cable – 4 wires |
| Standard linearity | +/- 0,15% f.s. +/- 0,10% f.s. (optional) |
| Protection class | IP54 (option IP67) |
| Max. Velocity | 10 m/s |
| Max. Acceleration | 5 m/s ² (before cable deformation) |
| Weight | ≈ 3000 g |
| Operating temperature | -20° to +80°C |
| Storage temperature | -30° to +80°C |

Cable forces:

| Measurement range in mm | Min. pull-out force | Max. pull-out force |
|-------------------------|---------------------|---------------------|
| 4000 | ≈ 11,00 N | ≈ 13,50 N |
| 6000 | ≈ 10,00 N | ≈ 13,50 N |

Ordering reference:



Reference example: **CD150-4000-U010-L15-K02-OP-AC-M4**

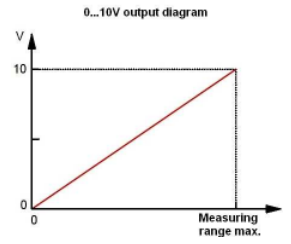
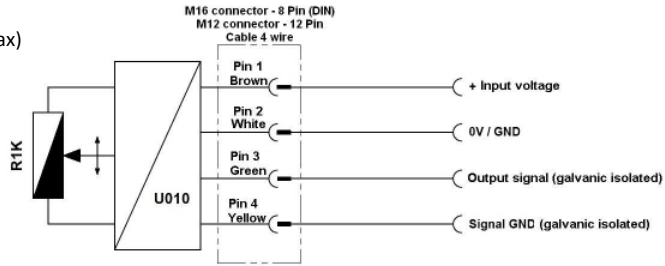


Tel : +33 (0)3 88 02 09 02 / Fax : +33 (0)3 88 02 09 03 / E-mail : info@ak-industries.com / Web : <http://www.ak-industries.com>

Electrical characteristics :

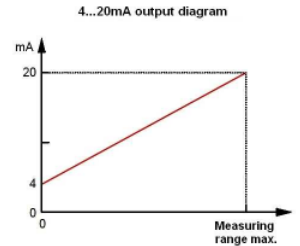
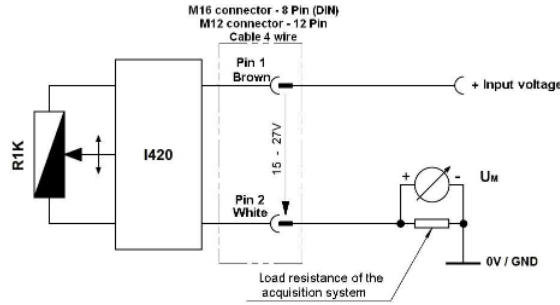
Analog version 0 ... 10V :

Input voltage 15 to +27 Vdc (52mA max)
 Output voltage 0 to 10 Vdc
 Output current 10mA max
 Galvanic isolation 3KV
 Protection - Short circuit
 - Polarity reversal
 Temperature drift +/-100 ppm/°C



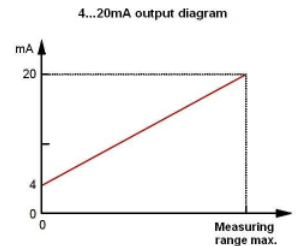
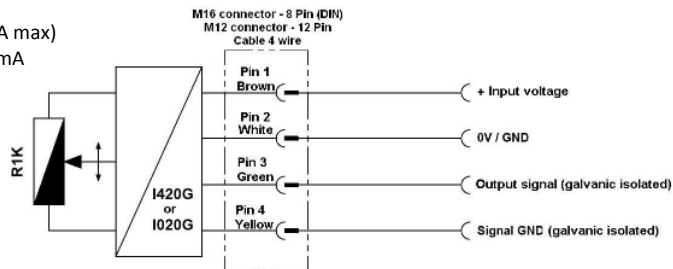
Analog version 4 ... 20mA : (Current loop)

Input voltage +15 to +27 Vdc (32mA max)
 Output current 4 to 20mA
 Protection - Short circuit
 - Polarity reversal
 Temperature drift +/-100 ppm/°C



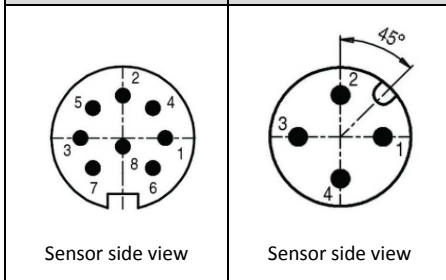
Analog version 4...20mA or 0...20mA : (Current generator)

Input voltage +15 to +27 Vdc (75mA max)
 Output current 4 to 20mA or 0 to 20mA
 Output current 22 mA max.
 Galvanic isolation 3KV
 Protection - Short circuit
 - Polarity reversal
 Temperature drift +/-100 ppm/°C



Connection :

| Male connector M16 8 pin (DIN) | Male connector M12 4 pin (DIN) | PVC cable 4 wire | 010V | I420 (current loop) | I420G or I020G (current generator) |
|-----------------------------------|-----------------------------------|---------------------|-------------------|------------------------|---------------------------------------|
| 1 | 1 | Brown | Input voltage + | Signal + | Input voltage + |
| 2 | 2 | White | Input voltage GND | Signal - | Input voltage GND |
| 3 | 3 | Green | Signal + | | Signal + |
| 4 | 4 | Yellow | Signal GND | | Signal GND |

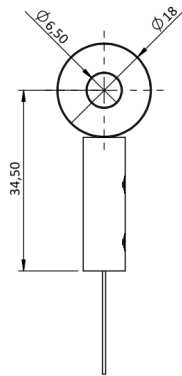


Options :

Cable attachment with a lug :

Standard

The attachment lug is fixed with a M6 screw or a clevis.



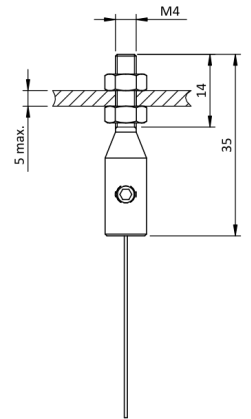
Cable attachment fitted with a M4 threaded rod:

OP-M4

The rod attachment uses a threaded rod with 2 nuts (provided). The required thickness of the plate does not exceed 5 mm.

Caution

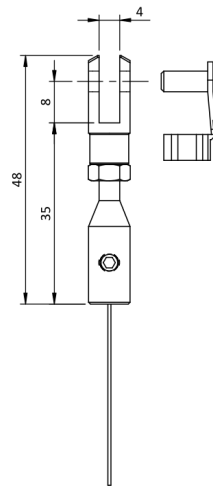
Never screw the threaded rod into a fixed nut, a twist of the measurement cable would damage it.



Cable attachment with a clevis :

OP-CP

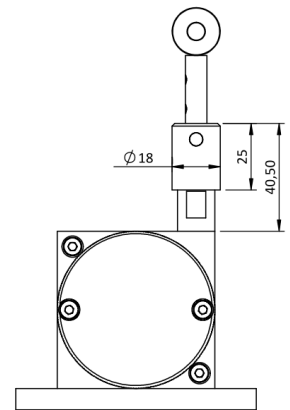
The attachment of the clevis is done using a pin (provided).



Cable cleaning brush:

OP-BR

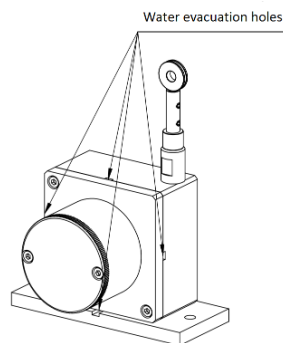
The cleaning brush wipes the cable in dusty or humid environments.



Water evacuation holes:

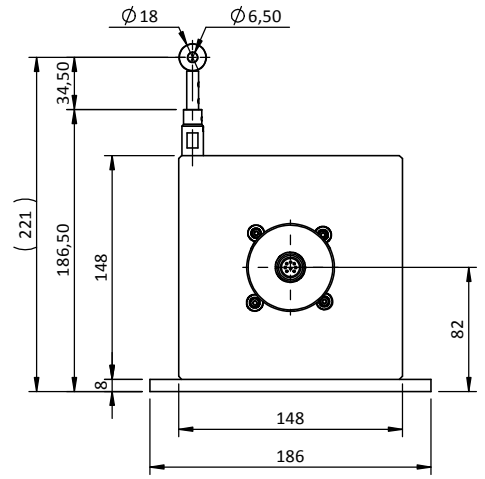
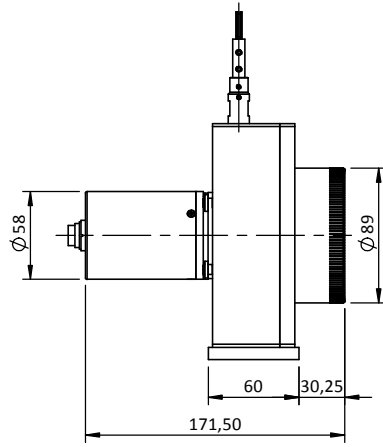
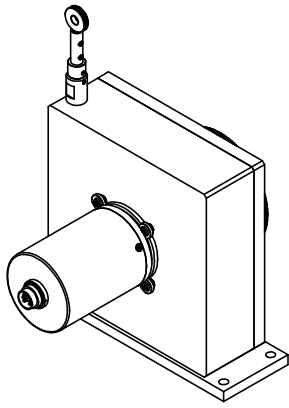
OP-TEV

The holes allow the natural flow of fluids out of the sensor in order to avoid their accumulation in the system.

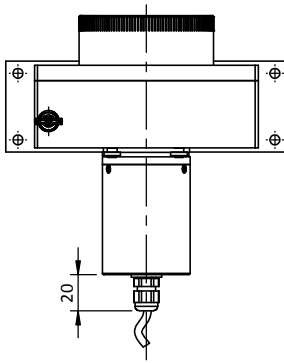


Dimensional Drawing

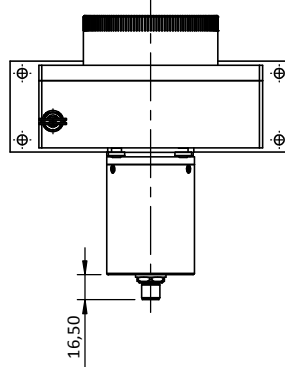
Measurement range up to 4000 mm



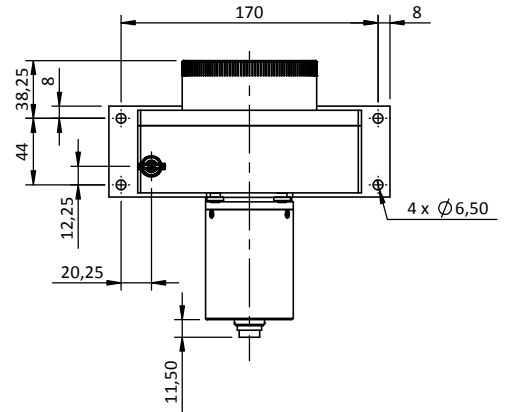
K connection
(PVC cable - 4 wires)



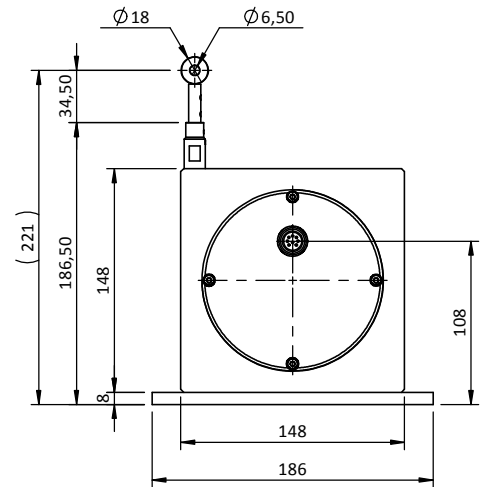
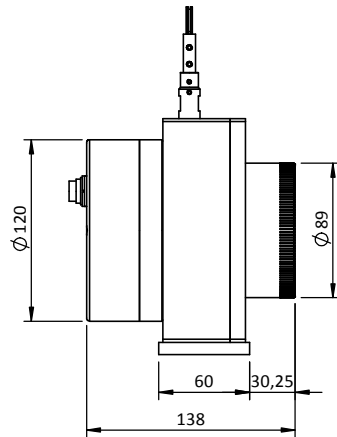
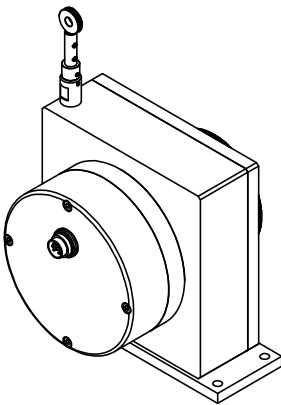
L4 connection
(connector M12 - 4 pin)



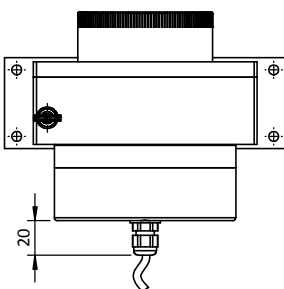
C connection
(Connector M16 - DIN 8 pin)



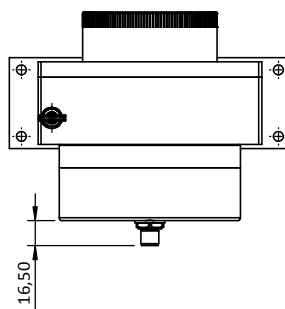
Measuring range greater than 4000 mm up to 6000 mm



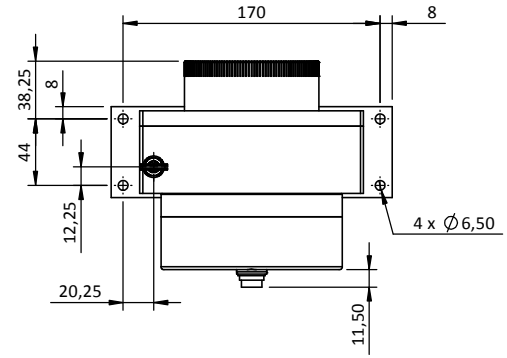
K connection
(PVC cable - 4 wires)



L4 connection
(connector M12 - 4 pin)



C connection
(Connector M16 - DIN 8 pin)



Tel : +33 (0)3 88 02 09 02 / Fax : +33 (0)3 88 02 09 03 / E-mail : info@ak-industries.com / Web : http://www.ak-industries.com