

Emergency Communication System Integrated Battery and Low Power Bus



Product Datasheet



Digital
Communication
Platform (DCP)



COP Unit



Triphony Unit



PIT Unit

Decrease your installation time by installing the new emergency communication system from Avire.

The new system includes Digital Audio Units (DAUs) for mounting in multiple locations around the lift shaft and are connected to the machine-room mounted Digital Communication Platform (DCP) using only 2-wires through the travelling cable.

The majority of lift emergency communication installations typically require the use of multiple wires through the travelling cable. These systems are often time consuming to install and can be frustrating if the spare wires are not available. DAU have an integrated battery back-up which means that there is no need to wire to the DCP for power, making it a true 2-wire installation.

The new Digital Audio Units simplify the installation and ensure that the engineer's time on site is kept to a minimum. In addition, the audio unit and accessories located on the lift car connect using a low power bus (LPBus). The connection allows for improved communication with the triphony units using digital rather than analogue communication. Connection between all units on the LPBus is a simple 'plug and play' RJ45 connector. The LPBus also allows the addition of other products easily.

To ensure AS 1735.19:2019 (EN81-28:2018) compliance, the DAU units need to be connected via MK CANBus to the DCP unit in the machine room. The DCP acts as an information gateway between connected products in the lift shaft and our cloud-based monitoring platform; the Avire Hub.

Please refer to our website for more information on Smart Elevators and the Avire Ecosystem.



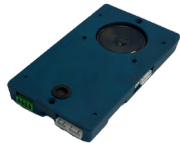
Key Features

- + AS 1735.19:2019 (EN81-28:2018) compliant
- + Quick to install using only 2-wires in the travelling cable
- + Integrated battery back-up in all units
- + High digital audio quality over 400m cables
- + CAN & LPBus connections
- + Supported by Digital Communications Platform (DCP)
- + Optional inductive loop and triphony units
- + Configure and monitor all connected devices using the Avire Hub

System Architecture



Digital Communication Platform (DCP)



COP Digital Audio Unit (DAU)



Triphony Unit



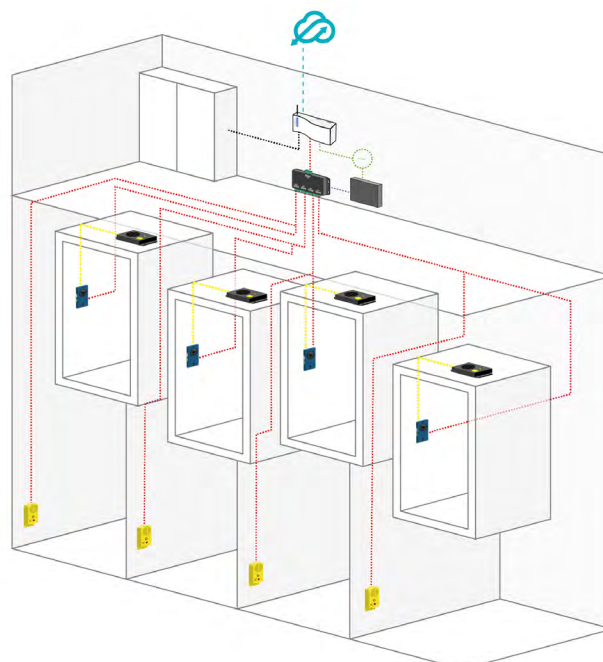
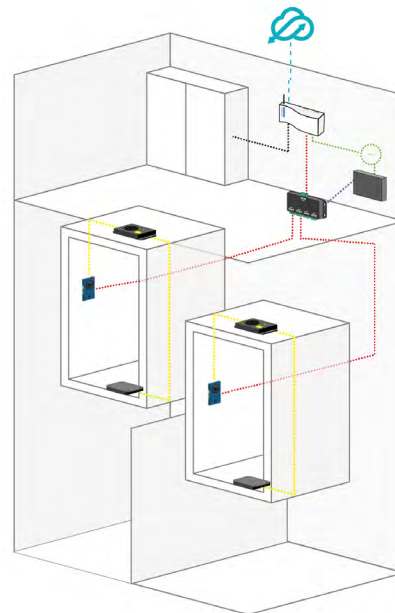
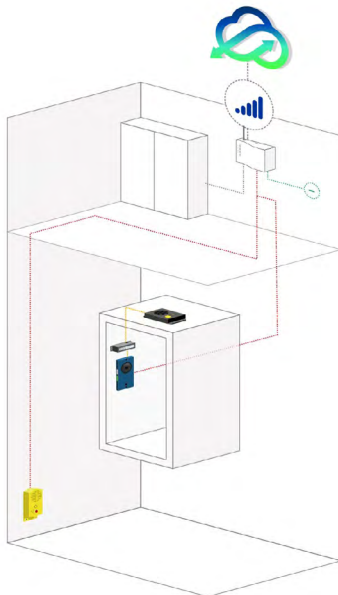
PIT Digital Audio Unit (DAU)



Universal Power Supply



CAN Bus Splitter



Technical Specification

| Digital Audio Units | AC-DAB10-110-F-OL-000 | AC-DAP11-110-F-00-000 | AC-AET08-100-0-OL-000 |
|--------------------------------|-----------------------|-----------------------|-----------------------|
| Mounting location | Behind COP | Pit | Top of car |
| Colour casing | Blue | Yellow | Black |
| Alarm button (for maintenance) | No | Yes | Yes |
| External pictograms | Yes | No | No |
| External microphone | Yes | No | No |
| External speaker | Yes | No | No |
| Internal microphone | Yes | Yes | Yes |
| Internal speaker | Yes | Yes | Yes |
| Battery | Integrated | Integrated | No |
| Battery fault indicator | Yes | No | No |
| Phone fault indicator | Yes | No | No |
| Power Supply | 8-28 VDC | 8-28 VDC | 5VDC |
| Consumption | 43mA - 190mA | 43mA - 190mA | 20mA-220mA |
| Connections | CAN & LPBus | CAN Only | LPBUS |
| Op. Temp. | -10 to +65°C | -10 to +65°C | -10 to +65 °C |
| Dimensions (WxHxD)(mm) | 71mm x 150mm x 23mm | 71mm x 173mm x 43mm | 84x1740x9.5 |

Ordering Information

| Part | Description |
|-----------------------|--|
| AC-3CM10-620-F-20-000 | 3G Digital Communication Platform - GSM/ GPRS/RS-232 |
| AC-4CM10-620-F-20-000 | 4G Single Sim Digital Communication Platform - GSM/GPRS/RS-232 |
| AC-4CM10-820-F-20-000 | 4G Dual Sim Digital Communication Platform - GSM/GPRS/RS-232 |
| AC-DAB10-120-F-OL-000 | CAN COP Digital Audio Unit |
| AC-DAP11-110-F-00-000 | CAN PIT Digital Audio Unit |
| MC-AES01-100-0-OL-000 | Surface Mount Accessory |
| AC-AET08-100-0-OL-000 | Triphony Unit |
| AC-ALB02-100-0-OL-000 | Inductive Loop |
| AC-ASM00-100-F-00-000 | CAN Bus Splitter |
| AC-ABV10-100-0-00-000 | Universal Power Supply |

As a result of our policy of continual improvement, the information in this document is subject to change without notice and it is intended only as general guidance on product performance and suitability. This information shall not form part of any contract.

Comms System LPBus +IB (AUS) V01_EP 22/04/2020

AVIRE

Avire Global Pte Ltd

Unit 39, 110-116 Bourke Road
Alexandria
NSW 2015
Australia

T: 02 9669 1102
E: sales.au@avire-global.com
W: www.avire-global.com

