



## ZS 236-11ZR-M20-1519

- Thermoplastic enclosure
- Good resistance to oil and petroleum spirit
- Wide range of alternative actuators
- 30 mm x 58,5 mm x 30 mm
- Double-insulated
- Mounting details to EN 50047
- Actuator heads can be repositioned by 4 x 90°

## Data

### Approvals - Standards

Certificates	cULus CCC
--------------	--------------

### General data

Standards	BG-GS-ET-15 EN ISO 13849-1 EN IEC 60947-5-1
Housing construction form	Norm construction design
Actuator type to EN 50047	B
Enclosure material	Plastic, glass-fibre-reinforced
Gross weight	49 g

### Safety classification

Standards	EN ISO 13849-1
Mission time	20 Year(s)

## Mechanical data

Actuating element	Plunger
Mechanical life, minimum	20,000,000 Operations
Actuating force, minimum	9 N
Positive break force, minimum	19 N
Actuating speed, minimum	60 mm/min
Actuating speed, maximum	1 m/s

## Mechanical data - Connection technique

Termination	Screw terminals M20 x 1.5
Cable section, minimum	0.75 mm <sup>2</sup>
Cable section, maximum	2.5 mm <sup>2</sup>
Note (Cable section)	All indications including the conductor ferrules.

## Mechanical data - Dimensions

Length of sensor	30 mm
Width of sensor	30 mm
Height of sensor	73.5 mm

## Ambient conditions

Degree of protection	IP65 IP67
Ambient temperature	-30 ... +80 °C

## Ambient conditions - Insulation values

Rated insulation voltage $U_i$	500 V
Rated impulse withstand voltage $U_{imp}$	6 kV

## Electrical data

Thermal test current	10 A
Required rated short-circuit current	1,000 A
Utilisation category AC-15	4 A
Utilisation category DC-13	24 VDC
Utilisation category DC-13	1 A
Switching element	NO contact, NC contact
Switching principle	Snap action with latch Snap action
Switching frequency	5,000 /h
Material of the contacts, electrical	Silver

## Pictures

### Product picture (catalogue individual photo)

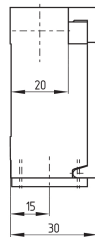
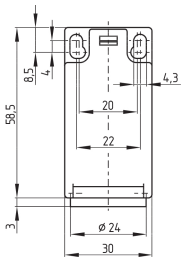


ID: k236sf07

| 783.8 kB | .jpg | 352.778 x 692.856 mm - 1000 x 1964 px - 72 dpi

| 87.8 kB | .png | 74.083 x 145.344 mm - 210 x 412 px - 72 dpi

### Dimensional drawing basic component

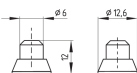


ID: 1-236g01

| 4.0 kB | .png | 74.083 x 73.378 mm - 210 x 208 px - 72 dpi

| 115.0 kB | .jpg | 352.778 x 349.956 mm - 1000 x 992 px - 72 dpi

## Dimensional drawing actuator



ID: 1s236g01

| 36.9 kB | .cdr |

| 1.7 kB | .png | 74.083 x 52.211 mm - 210 x 148 px - 72 dpi

| 29.8 kB | .jpg | 352.778 x 248.003 mm - 1000 x 703 px - 72 dpi

Schmersal Canada Ltd., 29 Centennial Road, Unit 1, Orangeville, Ontario L9W 1R1 Canada

The details and data referred to have been carefully checked. Images may diverge from original. Further technical data can be found in the manual. Technical amendments and errors possible.

Generated on: 29/05/2023, 07:07