



T4V7H 336-20Z-1058

- 1 Cable entry M 20 x 1.5
- Lever length infinitely adjustable
- Also available with large rubber roller and fixed lever
- with rubber roller 50 mm diameter
- Lever angle adjustable in 10° steps
- Design to EN 50041
- Thermoplastic enclosure
- Double-insulated
- suitable for elevators
- Good resistance to oil and petroleum spirit
- Wide range of alternative actuators
- Actuator heads can be repositioned by 4 x 90°

Data

Approvals - Standards

Certificates	cULus CCC
--------------	--------------

General data

Housing construction form	Norm construction design
Enclosure material	Plastic, glass-fibre-reinforced
Lever material	Metal film
Gross weight	194 g

General data - Features

Suitable for elevators	Yes
Number of auxiliary contacts	2

Safety classification

Standards	BG-GS-ET-15 EN ISO 13849-1 EN IEC 60947-5-1
Mission time	20 Year(s)

Mechanical data

Actuating element	Roller lever
Roller material	rubber
Mechanical life, minimum	30,000,000 Operations
Actuating speed, maximum	2.5 m/s
Note (Actuating speed)	Actuating speed with actuating angle 30° to switch axis
Note (Switchover time)	Switchover time in accordance with actuating speed

Mechanical data - Connection technique

Termination	Screw terminals M20 x 1.5
Cable section, minimum	0.75 mm ²
Cable section, maximum	2.5 mm ²
Note (Cable section)	All indications including the conductor ferrules.

Mechanical data - Dimensions

Length of sensor	38 mm
Width of sensor	40.5 mm
Height of sensor	244.5 mm

Ambient conditions

Degree of protection	IP65 IP67
Ambient temperature	-30 ... +80 °C

Ambient conditions - Insulation values

Rated insulation voltage U_i	500 V
Rated impulse withstand voltage U_{imp}	6 kV

Electrical data

Thermal test current	10 A
Required rated short-circuit current	1,000 A
Utilisation category AC-15	230 VAC
Utilisation category AC-15	4 A
Utilisation category DC-13	24 VDC
Utilisation category DC-13	4 A
Switching element	Normally open contact (NO)
Switching principle	Slow action
Bounce duration, maximum	2 ms
Switching frequency	5,000 /h
Material of the contacts, electrical	Silver

Pictures

Product picture (catalogue individual photo)

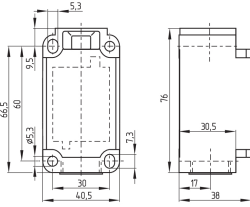


ID: K336HF06-edit

| 695.7 kB | .jpg | 190.5 x 487.892 mm - 540 x 1383 px - 72 dpi

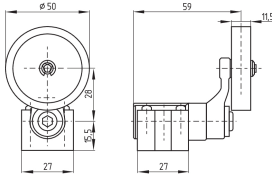
| 148.8 kB | .png | 74.083 x 189.442 mm - 210 x 537 px - 72 dpi

Dimensional drawing basic component



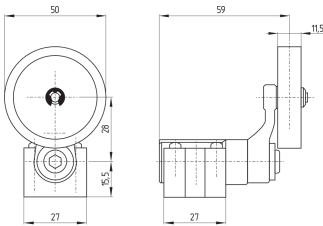
ID: 1-336g01
 | 51.4 kB | .cdr |
 | 4.1 kB | .png | 74.083 x 51.506 mm - 210 x 146 px - 72 dpi
 | 107.0 kB | .jpg | 352.778 x 245.181 mm - 1000 x 695 px - 72 dpi

Dimensional drawing actuator



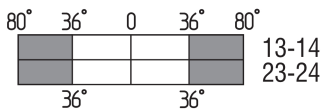
ID: 1h336g07
 | 25.7 kB | .cdr |
 | 4.4 kB | .png | 74.083 x 51.858 mm - 210 x 147 px - 72 dpi
 | 97.4 kB | .jpg | 352.778 x 247.297 mm - 1000 x 701 px - 72 dpi

Dimensional drawing actuator



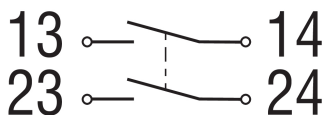
ID: kh336g07
 | 23.7 kB | .cdr |
 | 4.4 kB | .png | 74.083 x 50.447 mm - 210 x 143 px - 72 dpi
 | 106.6 kB | .jpg | 352.778 x 239.889 mm - 1000 x 680 px - 72 dpi

Switch travel diagram



ID: kh335s04
 | 24.0 kB | .cdr |
 | 1.7 kB | .png | 74.083 x 23.636 mm - 210 x 67 px - 72 dpi
 | 53.5 kB | .jpg | 352.778 x 112.889 mm - 1000 x 320 px - 72 dpi

Diagram



ID: k--2sk01
 | 51.9 kB | .jpg | 352.778 x 135.819 mm - 1000 x 385 px - 72 dpi
 | 2.6 kB | .png | 74.083 x 28.575 mm - 210 x 81 px - 72 dpi

Schmersal Ltd., Sparrowhawk Close, WR14 1GL Malvern

The details and data referred to have been carefully checked. Images may diverge from original. Further technical data can be found in the manual. Technical amendments and errors possible.

Generated on: 29/05/2023, 11:12