



TS 335-03Z-M20

- 1 Cable entry M 20 x 1.5
- Metal enclosure
- Wide range of alternative actuators
- Good resistance to oil and petroleum spirit
- 40,5 mm x 76 mm x 38 mm
- Actuator heads can be repositioned by 4 x 90°
- Design to EN 50041

Data

Approvals - Standards

Certificates	cULus CCC
--------------	--------------

General data

Housing construction form	Norm construction design
Actuator type to EN 50041	B
Enclosure material	Light alloy die-casting
Enclosure coating material	Painted
Gross weight	180 g

General data - Features

Safety functions	Yes
Number of safety contacts	3

Safety classification

Standards	BG-GS-ET-15 EN ISO 13849-1 EN IEC 60947-5-1
Mission time	20 Year(s)

Safety classification - Safety outputs

B _{10D} Normally-closed contact (NC)	20,000,000 Operations
---	-----------------------

Mechanical data

Actuating element	Plunger
Mechanical life, minimum	30,000,000 Operations
Actuating force, minimum	17 N
Actuating speed, maximum	0.5 m/s
Note (Switchover time)	Switchover time in accordance with actuating speed

Mechanical data - Connection technique

Termination	Screw terminals M20 x 1.5
Cable section, minimum	0.75 mm ²
Cable section, maximum	2.5 mm ²
Note (Cable section)	All indications including the conductor ferrules.

Mechanical data - Dimensions

Length of sensor	38 mm
Width of sensor	40.5 mm
Height of sensor	103.5 mm

Ambient conditions

Degree of protection	IP65 IP67
Ambient temperature	-30 ... +80 °C

Ambient conditions - Insulation values

Rated insulation voltage U_i	500 V
Rated impulse withstand voltage U_{imp}	4 kV

Electrical data

Thermal test current	10 A
Required rated short-circuit current	1,000 A
Utilisation category AC-15	230 VAC
Utilisation category AC-15	4 A
Utilisation category DC-13	24 VDC
Utilisation category DC-13	4 A
Switching element	Opener (NC)
Switching principle	Slow action
Bounce duration, maximum	2 ms
Switching frequency	5,000 /h
Material of the contacts, electrical	Silver

Pictures

Product picture (catalogue individual photo)

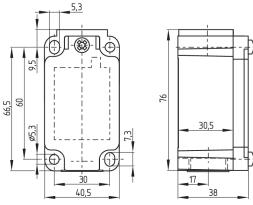


ID: k335sf01

| 939,8 kB | .jpg | 352.778 x 759.178 mm - 1000 x 2152 px - 72 dpi

| 87,8 kB | .png | 74.083 x 159.456 mm - 210 x 452 px - 72 dpi

Dimensional drawing basic component



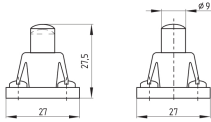
ID: 1-335g01

| 96,7 kB | .cdr |

| 4,5 kB | .png | 74.083 x 51.506 mm - 210 x 146 px - 72 dpi

| 105,8 kB | .jpg | 352.778 x 245.886 mm - 1000 x 697 px - 72 dpi

Dimensional drawing actuator



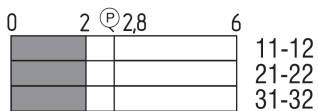
ID: 1s336g01

| 48,9 kB | .cdr |

| 2,7 kB | .png | 74.083 x 52.211 mm - 210 x 148 px - 72 dpi

| 52,6 kB | .jpg | 352.778 x 248.003 mm - 1000 x 703 px - 72 dpi

Switch travel diagram



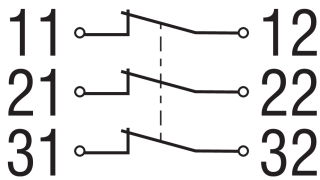
ID: kr335s17

| 25,8 kB | .cdr |

| 1,8 kB | .png | 74.083 x 25.047 mm - 210 x 71 px - 72 dpi

| 51,0 kB | .jpg | 352.778 x 119.592 mm - 1000 x 339 px - 72 dpi

Diagram



ID: k3o3sk01

| 18,9 kB | .cdr |

| 82,7 kB | .jpg | 352.778 x 191.558 mm - 1000 x 543 px - 72 dpi

| 3,2 kB | .png | 74.083 x 40.217 mm - 210 x 114 px - 72 dpi

| 6,7 kB | .png | 50.038 x 27.178 mm - 591 x 321 px - 300 dpi

| 2,4 kB | .jpg | 33.161 x 17.992 mm - 94 x 51 px - 72 dpi

Schmersal Nordiska AB, F O Petersons gata 28, S-421 31 Västra Frölunda

The details and data referred to have been carefully checked. Images may diverge from original. Further technical data can be found in the manual. Technical amendments and errors possible.

Generated on: 29/05/2023, 08:06