



## TK 236-02Z

- 1 Cable entry M 20 x 1.5
- Thermoplastic enclosure
- Good resistance to oil and petroleum spirit
- Wide range of alternative actuators
- 30 mm x 58,5 mm x 30 mm
- Double-insulated
- Mounting details to EN 50047
- Actuator heads can be repositioned by 4 x 90°

## Data

### Approvals - Standards

Certificates	cULus CCC
--------------	--------------

### General data

Standards	BG-GS-ET-15 EN ISO 13849-1 EN IEC 60947-5-1
Housing construction form	Norm construction design
Actuator type to EN 50047	e
Enclosure material	Plastic, glass-fibre-reinforced
Gross weight	55 g

### General data - Features

Safety functions	Yes
Number of safety contacts	2

## Safety classification

Standards	EN ISO 13849-1
Mission time	20 Year(s)

## Safety classification - Safety outputs

B <sub>10D</sub> Normally-closed contact (NC)	20,000,000 Operations
---	-----------------------

## Mechanical data

Actuating element	Offset roller lever
Mechanical life, minimum	20,000,000 Operations
Actuating force, minimum	9 N
Positive break force, minimum	19 N
Actuating speed, minimum	240 mm/min
Actuating speed, maximum	1 m/s
Note (Actuating speed)	Actuating speed with actuating angle 30° to switch axis
Note Bounce duration	Bounce duration in accordance with actuating speed
Note (Switchover time)	Switchover time in accordance with actuating speed

## Mechanical data - Connection technique

Termination	Screw terminals M20 x 1.5
Cable section, minimum	0.75 mm <sup>2</sup>
Cable section, maximum	2.5 mm <sup>2</sup>
Note (Cable section)	All indications including the conductor ferrules.

## Mechanical data - Dimensions

Length of sensor	30 mm
------------------	-------

Width of sensor	30 mm
Height of sensor	93.1 mm

### Ambient conditions

Degree of protection	IP65 IP67
Ambient temperature	-30 ... +80 °C

### Ambient conditions - Insulation values

Rated insulation voltage $U_i$	500 V
Rated impulse withstand voltage $U_{imp}$	6 kV

### Electrical data

Thermal test current	10 A
Required rated short-circuit current	1,000 A
Utilisation category AC-15	230 VAC
Utilisation category AC-15	4 A
Utilisation category DC-13	24 VDC
Utilisation category DC-13	1 A
Switching element	Opener (NC)
Switching principle	Slow action
Switching frequency	5,000 /h
Material of the contacts, electrical	Silver

## Pictures

### Product picture (catalogue individual photo)

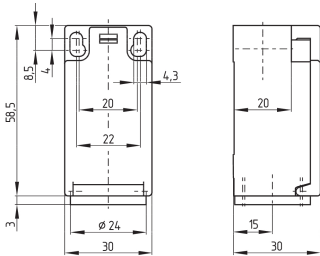


ID: k236kf01

| 919.7 kB | .jpg | 352.778 x 854.781 mm - 1000 x 2423 px - 72 dpi

| 103.0 kB | .png | 74.083 x 179.211 mm - 210 x 508 px - 72 dpi

## Dimensional drawing basic component

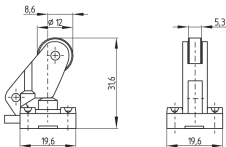


ID: 1-236g01

| 4.0 kB | .png | 74.083 x 73.378 mm - 210 x 208 px - 72 dpi

| 115.0 kB | .jpg | 352.778 x 349.956 mm - 1000 x 992 px - 72 dpi

## Dimensional drawing actuator



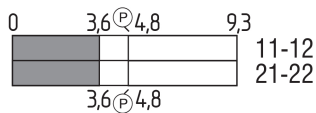
ID: 1k236g01

| 60.3 kB | .cdr |

| 3.6 kB | .png | 74.083 x 51.506 mm - 210 x 146 px - 72 dpi

| 67.4 kB | .jpg | 352.778 x 245.886 mm - 1000 x 697 px - 72 dpi

## Switch travel diagram



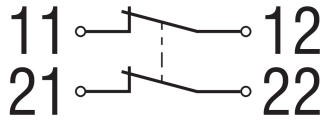
ID: kk235s13

| 26.9 kB | .cdr |

| 1.9 kB | .png | 74.083 x 24.694 mm - 210 x 70 px - 72 dpi

| 54.2 kB | .jpg | 352.778 x 117.475 mm - 1000 x 333 px - 72 dpi

## Diagram



ID: k2o--k01

| 48.8 kB | .jpg | 352.778 x 125.236 mm - 1000 x 355 px - 72 dpi

| 2.3 kB | .png | 74.083 x 26.458 mm - 210 x 75 px - 72 dpi

Schmersal, Inc., 15 Skyline Drive, Hawthorne, NY 10532

The details and data referred to have been carefully checked. Images may diverge from original. Further technical data can be found in the manual. Technical amendments and errors possible.

Generated on: 29/05/2023, 03:55