

AZ 05 K 08106

- Single wire entry
- Thermoplastic enclosure
- Contact pins in the switch
- 1 Actuating planes
- Protection against accidental contact with additional wall
- transparent cover
- fixing screws M4 undetachable, captive
- Fitting dimensions suitable for AZ 05x
- Self-cleaning through the frictional movement of the contact bridges

Data

General data

Standards	EN 81
Enclosure material	Plastic, glass-fibre reinforced thermoplastic, self-extinguishing
Material of the housing cover	transparent thermoplastic, self-extinguishing
Gross weight	35 g

General data - Features

Suitable for elevators	Yes
Number of safety contacts	1

Mechanical data

Actuating panels	1
Mechanical life, minimum	1,000,000 Operations
Actuating stroke	5 mm
Actuating force, approx.	1.6 N

Mounting

Round holes

Mechanical data - Connection technique

Termination	Screw terminals M20 x 1.5
Cable entry	Single wire entry

Mechanical data - Dimensions

Width	72 mm
Height	40 mm
Depth	26 mm

Ambient conditions

Degree of protection	IP00
Ambient temperature	-15 ... +70 °C
Relative humidity, maximum	95 %
Note (Relative humidity)	non-condensing

Ambient conditions - Insulation values

Rated insulation voltage U_i	500 V
--------------------------------	-------

Electrical data

Thermal test current	4 A
Utilisation category AC-15	230 VAC
Utilisation category AC-15	2 A
Utilisation category DC-13	200 VDC
Utilisation category DC-13	1 A
Switching element	Opener (NC)
Switching principle	Self-cleaning pressure contact
Material of the contacts, electrical	Silver-plated Cu rivets

Scope of delivery

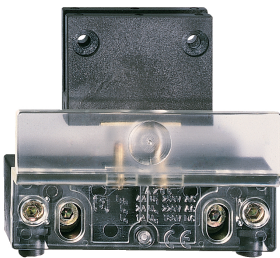
Scope of delivery Actuator must be ordered separately.

Note

Note (General) The connecting screws can be sealed with plugs. (2 plugs per switch)

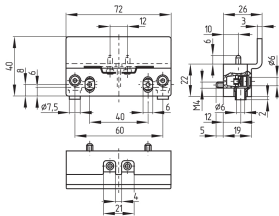
Pictures

Product picture (catalogue individual photo)



ID: kaz05f01
| 693.9 kB | .jpg | 308.328 x 299.156 mm - 874 x 848 px - 72 dpi
| 50.9 kB | .png | 74.083 x 71.967 mm - 210 x 204 px - 72 dpi

Dimensional drawing basic component



ID: 1az05g01
| 42.8 kB | .cdr |
| 10.0 kB | .png | 74.083 x 51.506 mm - 210 x 146 px - 72 dpi
| 131.1 kB | .jpg | 352.778 x 245.181 mm - 1000 x 695 px - 72 dpi

K.A. Schmersal GmbH & Co. KG, Möddinghofe 30, 42279 Wuppertal

The details and data referred to have been carefully checked. Images may diverge from original. Further technical data can be found in the manual. Technical amendments and errors possible.

Generated on: 29/05/2023, 07:12