



BNS 260-11Z-R

- Pre-wired cable
- Thermoplastic enclosure
- small body
- Concealed mounting possible
- 26 mm x 36 mm x 13 mm
- Long life
- no mechanical wear
- Insensitive to transverse misalignment
- Insensitive to soiling

Data

Approvals - Standards

Certificates	TÜV BG cULus
--------------	--------------------

General data

Standards	BG-GS-ET-14 EN IEC 60947-5-3
Coding level according to EN ISO 14119	Low
Working principle	Magnetic drive
Installation conditions (mechanical)	quasi-flush
Enclosure material	Glass-fibre, reinforced thermoplastic
Gross weight	55 g

General data - Features

Number of normally closed (NC)	1
Number of normally open (NO)	1
Number of safety contacts	2
Number of cable wires	4

Safety classification

Standards	EN ISO 13849-1
Mission time	20 Year(s)

Safety classification - Safety outputs

B_{10D} - Value Normally-closed contact/Normally open contact (NC/NO)	25,000,000 Operations
---	-----------------------

Mechanical data

Actuating element	Magnet
Door hinge	Right
Direction of motion	Head-on to the active surface

Mechanical data - Switching distances according EN IEC 60947-5-3

Note (Switching distance S_n)	Axial misalignment, a horizontal and vertical misalignment of the safety sensor and the actuator are tolerated. The possible misalignment depends on the distance of the active surfaces of the sensor and the actuator. The sensor remains active within the tolerance range.
Assured switching distance "ON" S_{ao}	5 mm
Assured switching distance "OFF" S_{ar}	15 mm

Mechanical data - Connection technique

Termination	Cable
-------------	-------

Length of cable	1 m
Wire cross-section	0.25 mm ²
Wire cross-section	23 AWG
Material of the Cable mantle	PVC

Mechanical data - Dimensions

Length of sensor	13 mm
Width of sensor	26 mm
Height of sensor	36 mm

Ambient conditions

Degree of protection	IP67
Ambient temperature	-25 ... +70 °C
Storage and transport temperature, minimum	-25 °C
Storage and transport temperature, maximum	+70 °C
Resistance to vibrations	10 ... 55 Hz, amplitude 1 mm
Resistance to shock	30 g / 11 ms

Ambient conditions - Insulation values

Rated insulation voltage U_i	50 VAC
Rated impulse withstand voltage U_{imp}	0.8 kV

Electrical data

Required rated short-circuit current	100 A
Switching voltage, maximum	75 VDC
Switching current, maximum	0.4 A
Switching capacity, maximum	10 VA

Switching frequency,
maximum 5 Hz

Scope of delivery

Scope of delivery Actuator must be ordered separately.

Accessory

Recommendation (actuator) BPS 260
Recommended safety
switchgear SRB-E-301ST
SRB-E-201LC

Note

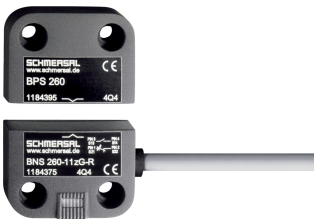
Note (General) Contact symbols shown for the closed condition of the guard device.
The contact configuration for versions with or without LED is identical.

Wiring example

Note (Wiring diagram) The contacts S13-S14 and S21-S22 must be integrated in the safety circuit.

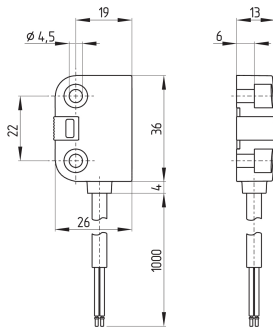
Pictures

Product picture (catalogue individual photo)



ID: kbns2f23
| 25.0 kB | .png | 74.083 x 51.858 mm - 210 x 147 px - 72 dpi
| 314.7 kB | .jpg | 352.778 x 246.239 mm - 1000 x 698 px - 72 dpi

Dimensional drawing basic component



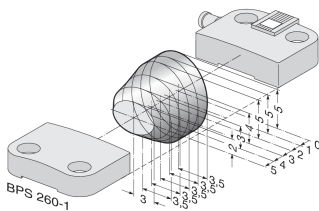
ID: kbns2g05
 | 37.3 kB | .cdr |
 | 4.5 kB | .png | 73.731 x 87.489 mm - 209 x 248 px - 72 dpi
 | 131.1 kB | .jpg | 352.425 x 417.336 mm - 999 x 1183 px - 72 dpi

Diagram

(3) BK S13 → S14 BU (4)
 (1) WH S21 → S22 BN (2)

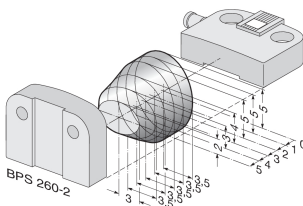
ID: kbns2k27
 | 56.4 kB | .jpg | 352.778 x 70.203 mm - 1000 x 199 px - 72 dpi
 | 2.7 kB | .png | 74.083 x 14.817 mm - 210 x 42 px - 72 dpi

Characteristic curve



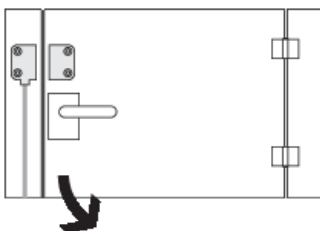
ID: kbns2d02
 | 19.2 kB | .png | 74.083 x 49.389 mm - 210 x 140 px - 72 dpi
 | 200.9 kB | .jpg | 352.778 x 235.303 mm - 1000 x 667 px - 72 dpi

Characteristic curve



ID: kbns2d03
 | 18.5 kB | .png | 74.083 x 49.036 mm - 210 x 139 px - 72 dpi
 | 200.1 kB | .jpg | 352.778 x 233.892 mm - 1000 x 663 px - 72 dpi

Clipart



ID: kbns2c01
 | 20.1 kB | .cdr |
 | 1.7 kB | .png | 74.083 x 52.564 mm - 210 x 149 px - 72 dpi

K.A. Schmersal GmbH & Co. KG, Möddinghofe 30, 42279 Wuppertal

The details and data referred to have been carefully checked. Images may diverge from original. Further technical data can be found in the manual. Technical amendments and errors possible.

Generated on: 29/05/2023, 06:42