



ZSM476E-02-230

- Electrical remote reset
- Thermoplastic enclosure
- Switching function latching
- Screw and pinch terminals for connection of wires
- Low actuation force and short contact trip value
- Magnetic trip action

Data

Approvals - Standards

Certificates	CE CCC UL UKCA
--------------	-------------------------

General data

Standards	EN IEC 62061 EN 81-20/-50 EN IEC 60947-5-1 EN IEC 60947-5-3 EN IEC 60947-5-5 EN IEC 60204-1 EN IEC 60947-1
Housing construction form	rectangular
Enclosure material	Plastic, glass-fibre reinforced thermoplastic, self-extinguishing
Gross weight	125 g

General data - Features

Suitable for elevators	Yes
Safety functions	Yes

Number of safety contacts 2

Safety classification - Safety outputs

B_{10D} Normally-closed contact (NC) 50,000 Operations

Mechanical data

Actuating element Plunger
Latching position bottom
Mechanical life, minimum 50,000 Operations
Actuating force, minimum 3 N

Mechanical data - Connection technique

Termination Screw terminals
Cable section, minimum 0.5 mm²
Cable section, maximum 1.5 mm²

Mechanical data - Dimensions

Length of sensor 108 mm
Width of sensor 41 mm
Height of sensor 33.2 mm

Ambient conditions

Degree of protection IP65
Ambient temperature -25 ... +50 °C

Ambient conditions - Insulation values

Rated insulation voltage U_i 250 VAC
Rated impulse withstand voltage U_{imp} 4 kV

Electrical data

Thermal test current	10 A
Utilisation category AC-15	230 VAC
Utilisation category AC-15	4 A
Utilisation category DC-13	24 VDC
Utilisation category DC-13	4 A
Switching element	Opener (NC)
Switching principle	Magnet Snap Action Latching Electromagnetic reset
Material of the contacts, electrical	Silver

Electrical data - Magnet control

Operating voltage	230 VAC -15 % / +10 %
Rated operating voltage	230 VAC
Switch-on time, maximum	2 s
Off-duty time, minimum	65 s
Magnet switch-on time	3 %
Pulse current at VAC	0,23 A -15%

Pictures

Product picture (catalogue individual photo)

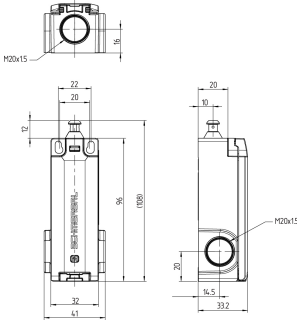


ID: kz476f02

| 324.4 kB | .jpg | 352.425 x 528.814 mm - 999 x 1499 px - 72 dpi

| 30.5 kB | .png | 73.731 x 110.772 mm - 209 x 314 px - 72 dpi

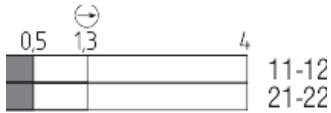
Dimensional drawing basic component



ID: kzsm4g04

| 122.8 kB | .jpg | 352.778 x 384.175 mm - 1000 x 1089 px - 72 dpi

Switch travel diagram



ID: kzsm4s14

| 1.9 kB | .png | 74.083 x 24.342 mm - 210 x 69 px - 72 dpi

K.A. Schmersal GmbH & Co. KG, Möddinghofe 30, 42279 Wuppertal

The details and data referred to have been carefully checked. Images may diverge from original. Further technical data can be found in the manual. Technical amendments and errors possible.

Generated on: 26/05/2023, 14:08