



ZSM476E-02-024

- Electrical remote reset
- Thermoplastic enclosure
- Switching function latching
- Screw and pinch terminals for connection of wires
- Low actuation force and short contact trip value
- Magnetic trip action

Data

Approvals - Standards

Certificates	CE CCC UL UKCA
--------------	-------------------------

General data

Standards	EN IEC 62061 EN 81-20/-50 EN IEC 60947-5-1 EN IEC 60947-5-3 EN IEC 60947-5-5 EN IEC 60204-1 EN IEC 60947-1
Housing construction form	rectangular
Enclosure material	Plastic, glass-fibre reinforced thermoplastic, self-extinguishing
Gross weight	125 g

General data - Features

Suitable for elevators	Yes
Safety functions	Yes

Number of safety contacts	2
---------------------------	---

Safety classification - Safety outputs

B _{10D} Normally-closed contact (NC)	50,000 Operations
-----------------------------------------------	-------------------

Mechanical data

Actuating element	Plunger
Latching position	bottom
Mechanical life, minimum	50,000 Operations
Actuating force, minimum	3 N

Mechanical data - Connection technique

Termination	Screw terminals
Cable section, minimum	0.5 mm ²
Cable section, maximum	1.5 mm ²

Mechanical data - Dimensions

Length of sensor	108 mm
Width of sensor	41 mm
Height of sensor	33.2 mm

Ambient conditions

Degree of protection	IP65
Ambient temperature	-25 ... +50 °C

Ambient conditions - Insulation values

Rated insulation voltage U _i	250 VAC
Rated impulse withstand voltage U _{imp}	4 kV

Electrical data

Thermal test current	10 A
Utilisation category AC-15	230 VAC
Utilisation category AC-15	4 A
Utilisation category DC-13	24 VDC
Utilisation category DC-13	4 A
Switching element	Opener (NC)
Switching principle	Magnet Snap Action Latching Electromagnetic reset
Material of the contacts, electrical	Silver

Electrical data - Magnet control

Operating voltage	24 VDC -15 % / +10 %
Rated operating voltage	24 VDC
Switch-on time, maximum	2 s
Off-duty time, minimum	65 s
Magnet switch-on time	3 %
Pulse current at VDC	2,3 A -15%

Pictures

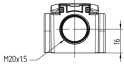
Product picture (catalogue individual photo)



ID: kz476f02

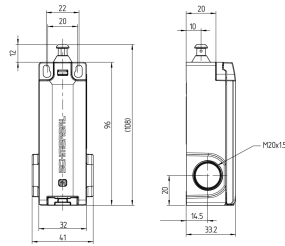
| 324.4 kB | .jpg | 352.425 x 528.814 mm - 999 x 1499 px - 72 dpi
| 30.5 kB | .png | 73.731 x 110.772 mm - 209 x 314 px - 72 dpi

Dimensional drawing basic component

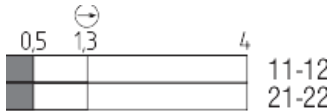


ID: kzsm4g04

| 122.8 kB | .jpg | 352.778 x 384.175 mm - 1000 x 1089 px - 72 dpi



Switch travel diagram



ID: kzsm4s14

| 1.9 kB | .png | 74.083 x 24.342 mm - 210 x 69 px - 72 dpi

K.A. Schmersal GmbH & Co. KG, Möddinghofe 30, 42279 Wuppertal

The details and data referred to have been carefully checked. Images may diverge from original. Further technical data can be found in the manual. Technical amendments and errors possible.

Generated on: 26/05/2023, 14:16