



TV7H 336-01/01Z-2138

- 1 Cable entry M 20 x 1.5
- Design to EN 50041
- Lever angle adjustable in 10° steps
- Thermoplastic enclosure
- Double-insulated
- Good resistance to oil and petroleum spirit
- Wide range of alternative actuators
- Actuator heads can be repositioned by 4 x 90°

Data

Approvals - Standards

Certificates	cULus CCC
--------------	--------------

General data

Housing construction form	Norm construction design
Enclosure material	Plastic, glass-fibre-reinforced
Lever material	Metal film
Gross weight	170 g

General data - Features

Safety functions	Yes
Number of safety contacts	2

Safety classification

Standards	EN ISO 13849-1
-----------	----------------

Mission time	20 Year(s)
--------------	------------

Safety classification - Safety outputs

B _{10D} Normally-closed contact (NC)	20,000,000 Operations
---	-----------------------

Mechanical data

Actuating element	Roller lever
Roller material	Plastic
Mechanical life, minimum	30,000,000 Operations
Actuating speed, maximum	2.5 m/s
Note (Actuating speed)	Actuating speed with actuating angle 30° to switch axis
Note (Switchover time)	Switchover time in accordance with actuating speed
Actuating torque, minimum	0.3 Nm

Mechanical data - Connection technique

Termination	Screw terminals M20 x 1.5
Cable section, minimum	0.75 mm ²
Cable section, maximum	2.5 mm ²
Note (Cable section)	All indications including the conductor ferrules.

Mechanical data - Dimensions

Length of sensor	57 mm
Width of sensor	40.5 mm
Height of sensor	171.5 mm

Ambient conditions

Degree of protection	IP65 IP67
Ambient temperature	-30 ... +80 °C

Ambient conditions - Insulation values

Rated insulation voltage U_i	500 V
Rated impulse withstand voltage U_{imp}	6 kV

Electrical data

Thermal test current	10 A
Required rated short-circuit current	1,000 A
Utilisation category AC-15	230 VAC
Utilisation category AC-15	4 A
Utilisation category DC-13	24 VDC
Utilisation category DC-13	4 A
Switching element	Opener (NC)
Switching principle	Slow action
Bounce duration, maximum	2 ms
Switching frequency	5,000 /h
Material of the contacts, electrical	Silver

Note

Note (General)	The positioning of the head must be carried out in factory. On version TVH 336-01/01z positive break only to one side.
----------------	---

Ordering code

Product type description:
(1)(2) 336-(3)Z(4)-(5)-(6)-(7)

(1)

Z	Snap action
T	Slow action (not for AF/S)

(2)

S	Plunger S
----------	-----------

R	Roller plunger R
H	Roller lever H
10H	Rod lever 10H
7H	Roller lever 7H
1K	Offset roller lever 1K
3K	Angle roller lever 3K
RMS	Brass roller
(3)	
11	1 NO contacts/1 NC contact
02	2 NC contact
20	2 NO contacts, (switches with 2 NO contacts are not suitable for safety applications)
01/01	1 NC contact left / 1 NC contact right
(4)	
H	Slow action with staggered contacts
UE	Slow action with overlapping contacts
(5)	
without	Cable entry M20
NPT	Cable entry NPT 1/2"
ST	M12 connector with A-coding
ST-2310	M12 connector with B-coding
(6)	
2138	Roller lever 7H for position switches with safety function
(7)	
1637	Gold-plated contacts

Pictures

Product picture (catalogue individual photo)

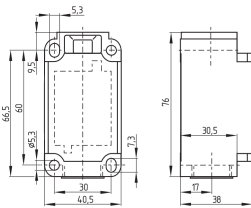


ID: k336hf16

| 958,0 kB | .jpg | 352.778 x 985.661 mm - 1000 x 2794 px - 72 dpi

| 124,0 kB | .png | 74.083 x 206.728 mm - 210 x 586 px - 72 dpi

Dimensional drawing basic component



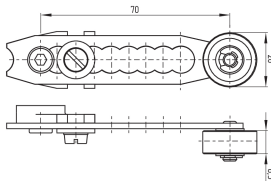
ID: 1-336g01

| 51,4 kB | .cdr |

| 4,1 kB | .png | 74.083 x 51.506 mm - 210 x 146 px - 72 dpi

| 107,0 kB | .jpg | 352.778 x 245.181 mm - 1000 x 695 px - 72 dpi

Dimensional drawing actuator



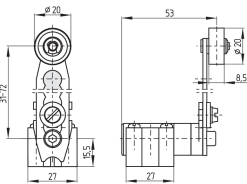
ID: 17h--g01

| 34,0 kB | .cdr |

| 11,0 kB | .png | 74.083 x 51.506 mm - 210 x 146 px - 72 dpi

| 111,6 kB | .jpg | 352.778 x 245.886 mm - 1000 x 697 px - 72 dpi

Dimensional drawing actuator



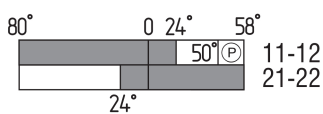
ID: 1h336g02

| 88,3 kB | .cdr |

| 10,3 kB | .png | 74.083 x 52.211 mm - 210 x 148 px - 72 dpi

| 102,9 kB | .jpg | 352.778 x 248.003 mm - 1000 x 703 px - 72 dpi

Switch travel diagram



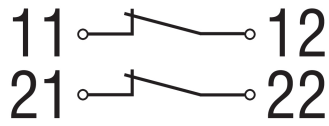
ID: kh335s07

| 24,8 kB | .cdr |

| 1,8 kB | .png | 74.083 x 23.636 mm - 210 x 67 px - 72 dpi

| 52,3 kB | .jpg | 352.778 x 112.889 mm - 1000 x 320 px - 72 dpi

Diagram



ID: k1o1ok01

| 17,9 kB | .cdr |

| 48,8 kB | .jpg | 352.778 x 126.647 mm - 1000 x 359 px - 72 dpi

| 2,3 kB | .png | 74.083 x 26.458 mm - 210 x 75 px - 72 dpi

Schmersal Nordiska AB, F O Petersons gata 28, S-421 31 Västra Frölunda

The details and data referred to have been carefully checked. Images may diverge from original. Further technical data can be found in the manual. Technical amendments and errors possible.

Generated on: 26/05/2023, 14:25