



## TS 336-11Z-M20

- 1 Cable entry M 20 x 1.5
- Design to EN 50041
- Thermoplastic enclosure
- Double-insulated
- Good resistance to oil and petroleum spirit
- Wide range of alternative actuators
- Actuator heads can be repositioned by 4 x 90°

## Data

### Approvals - Standards

Certificates	cULus CCC
--------------	--------------

### General data

Housing construction form	Norm construction design
Actuator type to EN 50041	B
Enclosure material	Plastic, glass-fibre-reinforced
Gross weight	128 g

### General data - Features

Safety functions	Yes
Number of auxiliary contacts	1
Number of safety contacts	1

### Safety classification

Standards	BG-GS-ET-15 EN ISO 13849-1 EN IEC 60947-5-1
Mission time	20 Year(s)

### Safety classification - Safety outputs

B <sub>10D</sub> Normally-closed contact (NC)	20,000,000 Operations
---	-----------------------

### Mechanical data

Actuating element	Plunger
Mechanical life, minimum	30,000,000 Operations
Actuating force, minimum	17 N
Actuating speed, maximum	0.5 m/s
Note (Switchover time)	Switchover time in accordance with actuating speed

### Mechanical data - Connection technique

Termination	Screw terminals M20 x 1.5
Cable section, minimum	0.75 mm <sup>2</sup>
Cable section, maximum	2.5 mm <sup>2</sup>
Note (Cable section)	All indications including the conductor ferrules.

### Mechanical data - Dimensions

Length of sensor	38 mm
Width of sensor	40.5 mm
Height of sensor	103.5 mm

### Ambient conditions

Degree of protection	IP65 IP67
Ambient temperature	-30 ... +80 °C

## Ambient conditions - Insulation values

Rated insulation voltage $U_i$	500 V
Rated impulse withstand voltage $U_{imp}$	6 kV

## Electrical data

Thermal test current	10 A
Required rated short-circuit current	1,000 A
Utilisation category AC-15	230 VAC
Utilisation category AC-15	4 A
Utilisation category DC-13	24 VDC
Utilisation category DC-13	4 A
Switching element	NO contact, NC contact
Switching principle	Slow action
Bounce duration, maximum	2 ms
Switching frequency	5,000 /h
Material of the contacts, electrical	Silver

## Pictures

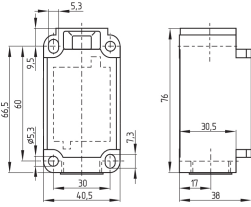
### Product picture (catalogue individual photo)



ID: k336sf01

| 632.4 kB | .jpg | 352.778 x 701.322 mm - 1000 x 1988 px - 72 dpi  
| 78.9 kB | .png | 74.083 x 147.108 mm - 210 x 417 px - 72 dpi

### Dimensional drawing basic component



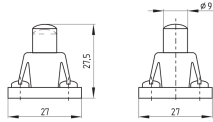
ID: 1-336g01

| 51.4 kB | .cdr |

| 4.1 kB | .png | 74.083 x 51.506 mm - 210 x 146 px - 72 dpi

| 107.0 kB | .jpg | 352.778 x 245.181 mm - 1000 x 695 px - 72 dpi

## Dimensional drawing actuator



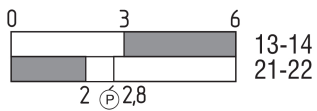
ID: 1s336g01

| 48.9 kB | .cdr |

| 2.7 kB | .png | 74.083 x 52.211 mm - 210 x 148 px - 72 dpi

| 52.6 kB | .jpg | 352.778 x 248.003 mm - 1000 x 703 px - 72 dpi

## Switch travel diagram



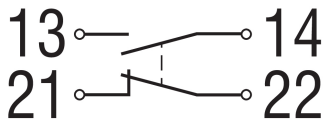
ID: kr335s08

| 24.6 kB | .cdr |

| 1.7 kB | .png | 74.083 x 23.283 mm - 210 x 66 px - 72 dpi

| 42.1 kB | .jpg | 352.778 x 111.478 mm - 1000 x 316 px - 72 dpi

## Diagram



ID: k1o1sk01

| 52.2 kB | .jpg | 352.778 x 143.581 mm - 1000 x 407 px - 72 dpi

| 2.6 kB | .png | 74.083 x 29.986 mm - 210 x 85 px - 72 dpi

Schmersal Ltd., Sparrowhawk Close, WR14 1GL Malvern

The details and data referred to have been carefully checked. Images may diverge from original. Further technical data can be found in the manual. Technical amendments and errors possible.

Generated on: 26/05/2023, 14:22