



AZ 14-1 KD CONTACT

- Actuation cover-side
- Thermoplastic enclosure
- Contact pin in actuator bridge
- 2 actuating planes
- Protection class IP20
- Self-cleaning through the frictional movement of the contact bridges

Data

Approvals - Standards

Certificates	TÜV CCC
--------------	------------

General data

Standards	EN 81-20 EN 81-50
Enclosure material	Plastic, glass-fibre reinforced thermoplastic, self-extinguishing
Material of the housing cover	thermoplastic, self-extinguishing
Gross weight	40 g

General data - Features

Suitable for elevators	Yes
Number of safety contacts	1

Mechanical data

Actuating panels	cover-side
------------------	------------

Mechanical life, minimum	1,000,000 Operations
Actuating stroke	7 mm
Actuating force, approx.	2.2 N
Mounting	Round holes

Mechanical data - Connection technique

Termination	Screw terminals M20 x 1.5
Cable entry	Wiring compartment
Notes	M4, with self-opening clamping plates

Mechanical data - Dimensions

Width	44 mm
Height	61 mm
Depth	19 mm

Ambient conditions

Degree of protection	IP20
Ambient temperature	-30 ... +70 °C

Ambient conditions - Insulation values

Rated insulation voltage U_i	500 V
--------------------------------	-------

Electrical data

Thermal test current	6 A
Utilisation category AC-15	230 VAC
Utilisation category AC-15	2 A
Utilisation category DC-13	200 VDC
Utilisation category DC-13	2 A
Switching element	Opener (NC)
Switching principle	Self-cleaning pressure contact

Material of the contacts, electrical

Silver-plated Cu rivets

Scope of delivery

Scope of delivery

Actuator must be ordered separately.

Pictures

Product picture (catalogue individual photo)

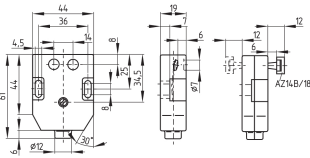


ID: kaz14f02

| 11.7 kB | .png | 73.731 x 122.061 mm - 209 x 346 px - 72 dpi

| 290.2 kB | .jpg | 252.236 x 416.631 mm - 715 x 1181 px - 72 dpi

Dimensional drawing basic component



ID: 1az14g01

| 33.2 kB | .cdr |

| 4.9 kB | .png | 74.083 x 51.858 mm - 210 x 147 px - 72 dpi

| 115.9 kB | .jpg | 352.778 x 247.297 mm - 1000 x 701 px - 72 dpi

K.A. Schmersal GmbH & Co. KG, Möddinghofe 30, 42279 Wuppertal

The details and data referred to have been carefully checked. Images may diverge from original. Further technical data can be found in the manual. Technical amendments and errors possible.

Generated on: 26/05/2023, 14:38