



T4V7H 336-11Z-M20

- 1 Cable entry M 20 x 1.5
- **only for positioning tasks**
- Design to EN 50041
- Thermoplastic enclosure
- Lever angle adjustable in 10° steps
- Double-insulated
- Good resistance to oil and petroleum spirit
- Wide range of alternative actuators
- Actuator heads can be repositioned by 4 x 90°

Data

Approvals - Standards

Certificates	cULus CCC
--------------	--------------

General data

Housing construction form	Norm construction design
Enclosure material	Plastic, glass-fibre-reinforced
Lever material	Metal film
Gross weight	184 g

General data - Features

Number of auxiliary contacts	1
Number of safety contacts	1

Safety classification

Standards	BG-GS-ET-15 EN ISO 13849-1 EN IEC 60947-5-1
Mission time	20 Year(s)

Safety classification - Safety outputs

B _{10D} Normally-closed contact (NC)	20,000,000 Operations
---	-----------------------

Mechanical data

Actuating element	Roller lever
Roller material	Plastic
Mechanical life, minimum	30,000,000 Operations
Actuating speed, maximum	2.5 m/s
Note (Actuating speed)	Actuating speed with actuating angle 30° to switch axis
Note (Switchover time)	Switchover time in accordance with actuating speed
Actuating torque, minimum	0.3 Nm

Mechanical data - Connection technique

Termination	Screw terminals M20 x 1.5
Cable section, minimum	0.75 mm ²
Cable section, maximum	2.5 mm ²
Note (Cable section)	All indications including the conductor ferrules.

Mechanical data - Dimensions

Length of sensor	57 mm
Width of sensor	40.5 mm
Height of sensor	173.5 mm

Ambient conditions

Degree of protection	IP65 IP67
----------------------	--------------

Ambient temperature -30 ... +80 °C

Ambient conditions - Insulation values

Rated insulation voltage U_i 500 V
Rated impulse withstand voltage U_{imp} 6 kV

Electrical data

Thermal test current 10 A
Required rated short-circuit current 1,000 A
Utilisation category AC-15 230 VAC
Utilisation category AC-15 4 A
Utilisation category DC-13 24 VDC
Utilisation category DC-13 4 A
Switching element NO contact, NC contact
Switching principle Slow action
Bounce duration, maximum 2 ms
Switching frequency 5,000 /h
Material of the contacts, electrical Silver

Pictures

Product picture (catalogue individual photo)

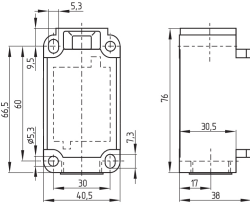


ID: k336hf02

| 996.2 kB | .jpg | 352.778 x 947.561 mm - 1000 x 2686 px - 72 dpi

| 123.7 kB | .png | 74.083 x 198.967 mm - 210 x 564 px - 72 dpi

Dimensional drawing basic component



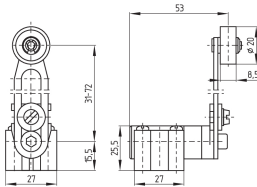
ID: 1-336g01

| 51.4 kB | .cdr |

| 4.1 kB | .png | 74.083 x 51.506 mm - 210 x 146 px - 72 dpi

| 107.0 kB | .jpg | 352.778 x 245.181 mm - 1000 x 695 px - 72 dpi

Dimensional drawing actuator



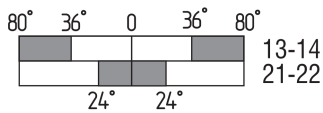
ID: 1h355g02

| 30.2 kB | .cdr |

| 9.6 kB | .png | 74.083 x 51.153 mm - 210 x 145 px - 72 dpi

| 104.9 kB | .jpg | 352.778 x 243.769 mm - 1000 x 691 px - 72 dpi

Switch travel diagram



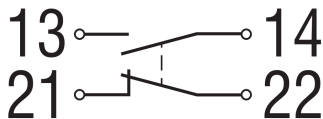
ID: kh335s10

| 25.1 kB | .cdr |

| 1.9 kB | .png | 74.083 x 24.342 mm - 210 x 69 px - 72 dpi

| 52.9 kB | .jpg | 352.778 x 116.064 mm - 1000 x 329 px - 72 dpi

Diagram



ID: k1o1sk01

| 52.2 kB | .jpg | 352.778 x 143.581 mm - 1000 x 407 px - 72 dpi

| 2.6 kB | .png | 74.083 x 29.986 mm - 210 x 85 px - 72 dpi

K.A. Schmersal GmbH & Co. KG, Möddinghofe 30, 42279 Wuppertal

The details and data referred to have been carefully checked. Images may diverge from original. Further technical data can be found in the manual. Technical amendments and errors possible.

Generated on: 26/05/2023, 13:35