



## ACTUATOR AZ 17/170-B5

### Data

#### General data

Material of the actuator	Stainless steel (V2A)
Gross weight	20 g

#### Mechanical data

Actuating radius, minimum	140 mm
Actuator	angled

#### Note

Note (General)	minimum actuating radius on rotating guard systems via the narrow edge of the actuator 140 mm minimum actuating radius on hinged guards in line with the plane of the actuator 200 mm The axis of the hinge must be 13 mm above and in a parallel plane to the top surface of the safety switch.
----------------	--------------------------------------------------------------------------------------------------------------------------------------------------------------------------------------------------------------------------------------------------------------------------------------------------------

### Pictures

#### Product picture (catalogue individual photo)



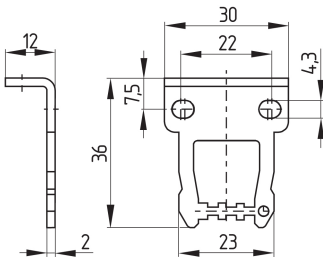
ID: kaz17f09

| 4.1 MB | .tif | 109 x 130.2 mm - 1090 x 1302 px - 254 dpi

| 308.8 kB | .jpg | 352.778 x 458.258 mm - 1000 x 1299 px - 72 dpi

| 30.3 kB | .png | 73.731 x 95.956 mm - 209 x 272 px - 72 dpi

## Dimensional drawing actuator



ID: 1az17b06

| 99.1 kB | .jpg | 352.778 x 277.989 mm - 1000 x 788 px - 72 dpi

| 4.8 kB | .png | 74.083 x 58.561 mm - 210 x 166 px - 72 dpi

K.A. Schmersal GmbH & Co. KG, Möddinghofe 30, 42279 Wuppertal

The details and data referred to have been carefully checked. Images may diverge from original. Further technical data can be found in the manual. Technical amendments and errors possible.

Generated on: 26/05/2023, 13:02