



ACTUATOR AZ 17/170-B1

Data

General data

Material of the actuator Stainless steel

Gross weight 13 g

Mechanical data

Actuating radius,
minimum 140 mm

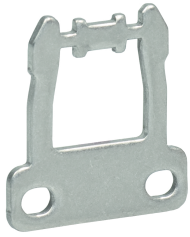
Actuator straight
rigid

Note

Note (General) The axis of the hinge must be 10 mm above and in a parallel plane to the top surface of the safety switch.
minimum actuating radius on rotating guard systems via the narrow edge of the actuator 140 mm
minimum actuating radius on hinged guards in line with the plane of the actuator 200 mm

Pictures

Product picture (catalogue individual photo)



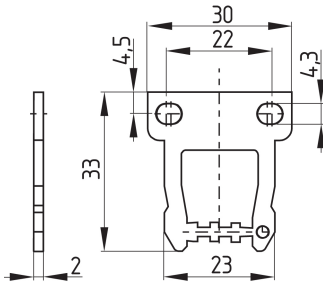
ID: kaz17f13

| 3.6 MB | .tif | 94.9 x 130.2 mm - 949 x 1302 px - 254 dpi

| 280.4 kB | .jpg | 352.778 x 423.333 mm - 1000 x 1200 px - 72 dpi

| 26.3 kB | .png | 74.083 x 88.9 mm - 210 x 252 px - 72 dpi

Dimensional drawing actuator



ID: 1az17b03

| 104.1 kB | .jpg | 352.778 x 309.386 mm - 1000 x 877 px - 72 dpi

| 5.4 kB | .png | 74.083 x 64.911 mm - 210 x 184 px - 72 dpi

| 13.8 kB | .png | 50.038 x 43.857 mm - 591 x 518 px - 300 dpi

| 27.1 kB | .jpg | 112.889 x 99.131 mm - 320 x 281 px - 72 dpi

K.A. Schmersal GmbH & Co. KG, Möddinghofe 30, 42279 Wuppertal

The details and data referred to have been carefully checked. Images may diverge from original. Further technical data can be found in the manual. Technical amendments and errors possible.

Generated on: 26/05/2023, 12:25