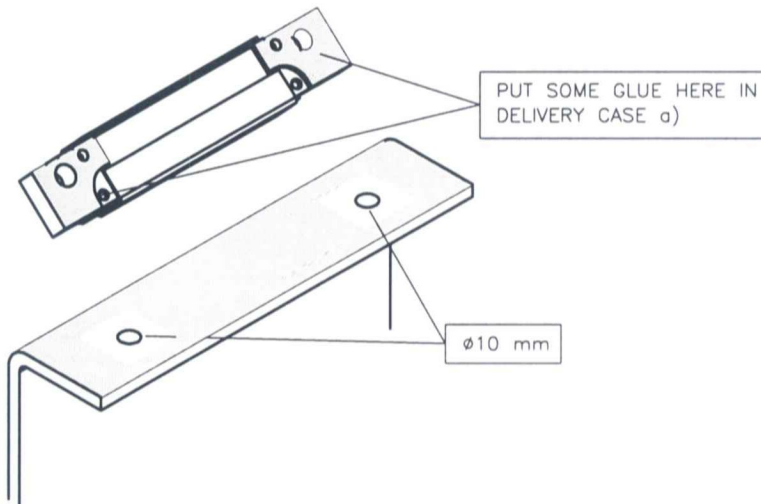
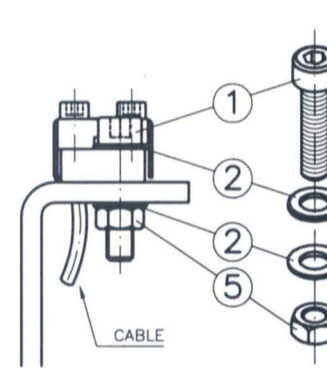


## INSTALLATION METHOD

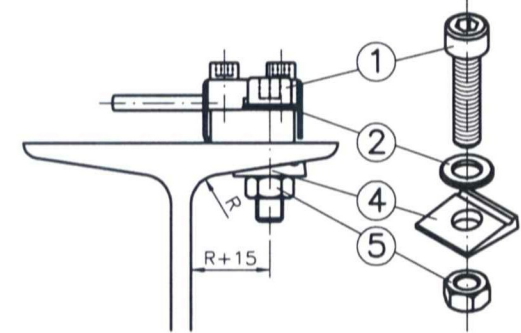
- DRIVE THE CAR TO BOTTOM LANDING, EMPTY THE CAR. NOTE! THERE MUST BE ONLY ONE PERSON ON THE CAR DURING THE INSTALLATION AND ADJUSTING OF THE STRING GAGE.
- MARK EXACTLY AND DRILL SCREW HOLES WITH 10 mm DRILL. FOR HIGH ACCURACY LOCATION OF THE SENSOR SHOULD BE AS CLOSE AS POSSIBLE TO THE BEAM WEB (SEE LOCATION FROM PICTURES).
- REMOVE ANY BURRS AND SMOOTH THE BEAM SURFACE WITH SANDPAPER. CHECK THAT THE SURFACE IS FLAT, CLEAN AND FREE OIL AND GREASE.
- CHECK WITH SENSOR THAT SCREWS GO FREELY THROUGH DRILLED HOLES.
- DEPENDING ON THE DELIVERY FIX THE SENSOR WITH a) GLUE, BOLTS (HARDNESS 12.9, TIGHTENING TO 36 TO 20 Nm) AND NUTS (HARDNESS 10) OR b) ONLY BOLTS (HARDNESS 12.9, TIGHTENING TO 36 Nm) AND NUTS (HARDNESS 10). CASE a) APPLY GLUE (LOCTITE, CHECK TOTAL HARDENING TIME FROM PACKING CASE) TO THE CONTACT SURFACES AND FIX THE SENSOR AS SHOWN IN PICTURE BELOW.



### FIXING TO BENT PLATE



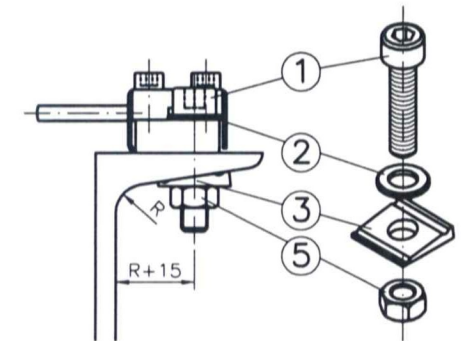
### FIXING TO I-BEAM



### FIXING PARTS:

- ① HEXAGON SOCKET HEAD SCREW  
M8x50 12.9 DIN 912
- ② PLANE WASHER  
M8 DIN 125
- ③ SQUARE TAPER WASHER (8%)  
M8 DIN 434
- ④ SQUARE TAPER WASHER (14%)  
M8 DIN 435
- ⑤ HEXAGON NUT  
M8 10 DIN 934
- ⑥ LOCTITE LT638 - 5ML

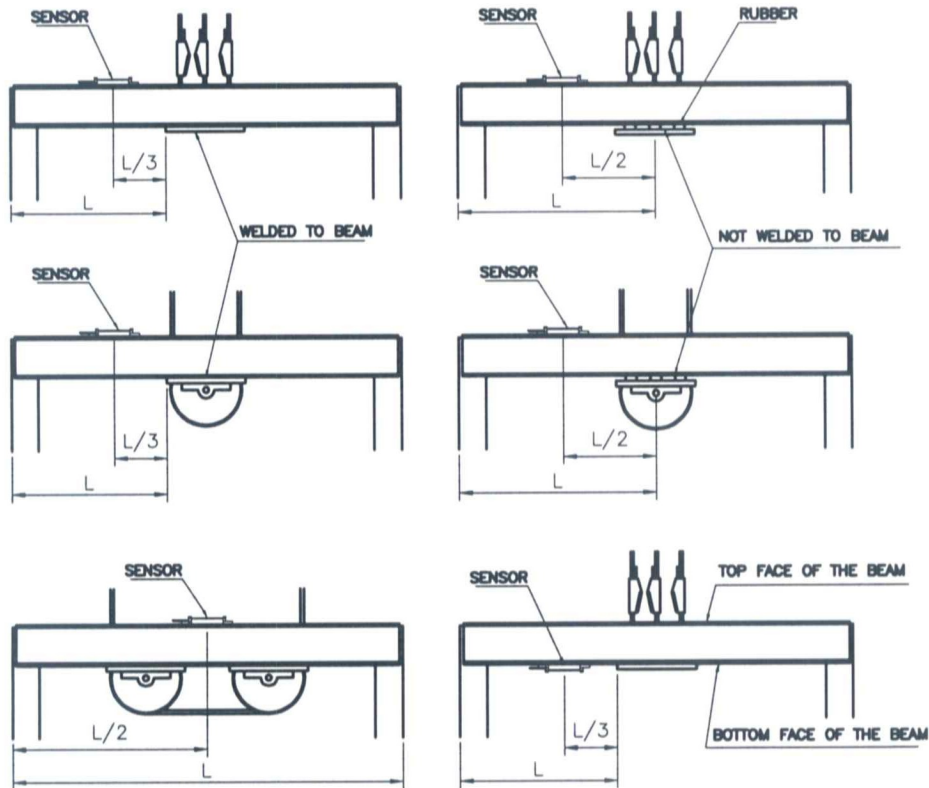
### FIXING TO U-PROFILE



## POSITION OF SENSOR(S)

THE POSITION OF THE SENSOR(S) DEPENDS ON THE CONSTRUCTION OF THE CAR SLING. EXAMPLE PICTURES BELOW SHOW THE OPTIMUM POSITION OF THE SENSOR(S) FOR COMMON SLING TYPES. IF YOU HAVE A DIFFERENT KIND OF SLING CHECK FOLLOWING PRINCIPLES:

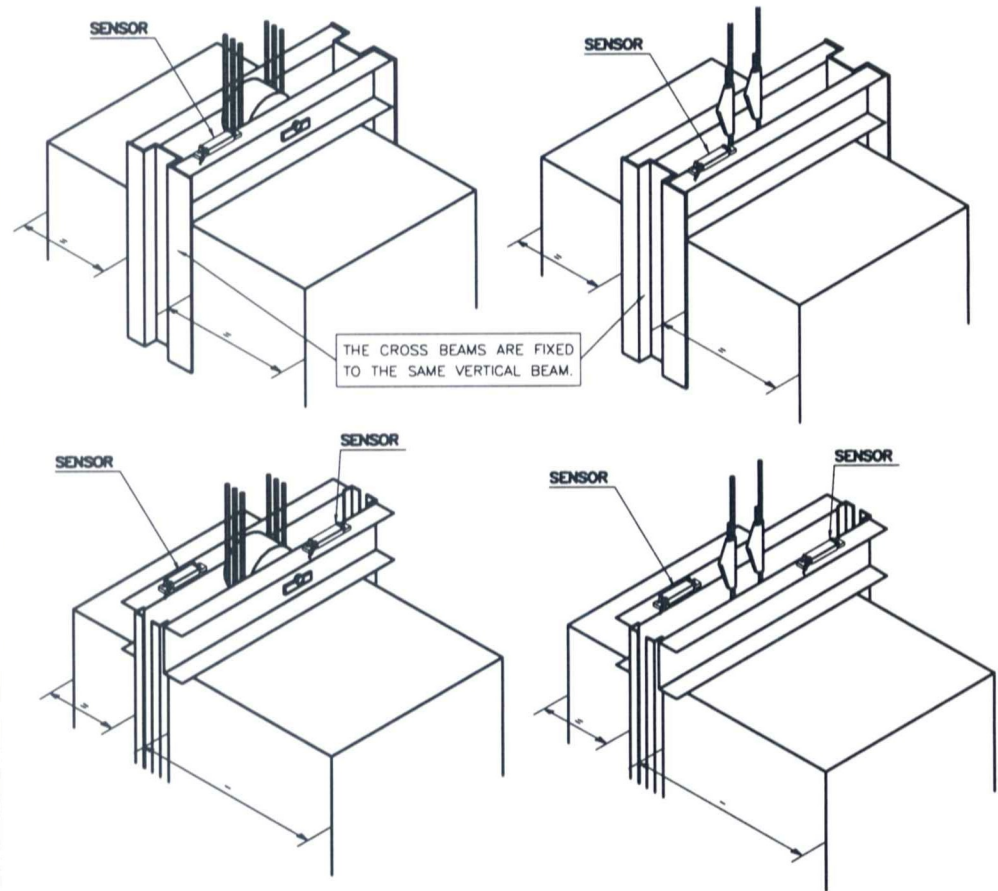
- THE SENSOR MEASURES RELATIVE STRETCH, AVOID TWIST.
- DO NOT INSTALL THE SENSOR ABOVE CROSS OF TWO BEAMS WITH BOLT FIXING (1). IF THERE IS WELDING (2) BETWEEN THE BEAMS, THE PLACE IS SUITABLE FOR SENSOR INSTALLATION.



### NOTE:

IT IS POSSIBLE TO MOUNT THE LOAD SENSOR TO THE BOTTOM FACE OF THE BEAM. IF SO, THE SENSOR CABLE WIRES (YELLOW AND GREEN) MUST BE CONNECTED REVERSED TO THE CENTRAL UNIT TERMINAL.

## INSTALLATION OF THE SENSOR IN DIFFERENT TYPES OF CAR SLINGS



### ONLY ONE SENSOR IS USED ON THE CROSS BEAM WHEN:

- THE CAPACITY OF THE CAR IS LOWER THAN 1000 Kg AND THE CROSS BEAMS ARE FIXED TO SAME VERTICAL BEAM AND THE CAR IS SYMMETRICALLY SITUATED WITHIN THE CAR SLING.

### TWO SENSORS ARE USED ON THE CROSS BEAM(S) WHEN:

- THE CAPACITY OF THE CAR IS OVER 1000 Kg OR THE DEPTH OF THE CAR IS MORE THAN 1.4 x WIDTH (FOR EXAMPLE BEDLIFTS).
- THE CROSS BEAMS ARE FIXED TO SEPARATE VERTICAL BEAMS.
- THE CAR IS NOT SYMMETRICALLY SITUATED WITHIN THE CAR SLING.